

Community Profile

Kinloss

Forres ASG/LMG



**Moray
Community Planning
Partnership**



Kinloss, Moray

Area profile

Kinloss (Cinn Lois) is located near the shore of Findhorn Bay, around 3 miles (5 km) from Findhorn and 2.5 miles (4 km) from Forres. Northeast of the village is Kinloss Barracks, formerly RAF Kinloss which opened on 1 April 1939. The Cistercian Kinloss Abbey was created in 1150 by King David I of Scotland. Under Abbot Robert Reid the abbey became a center of academic excellence in the 1530s. Mary Queen of Scots stayed there in 1562 but over the years that followed, the lands and properties of the abbey were gradually run down, and in 1652 most of its stone was sold to Oliver Cromwell's army for use in the construction of their citadel in Inverness. It now lies almost completely ruined.

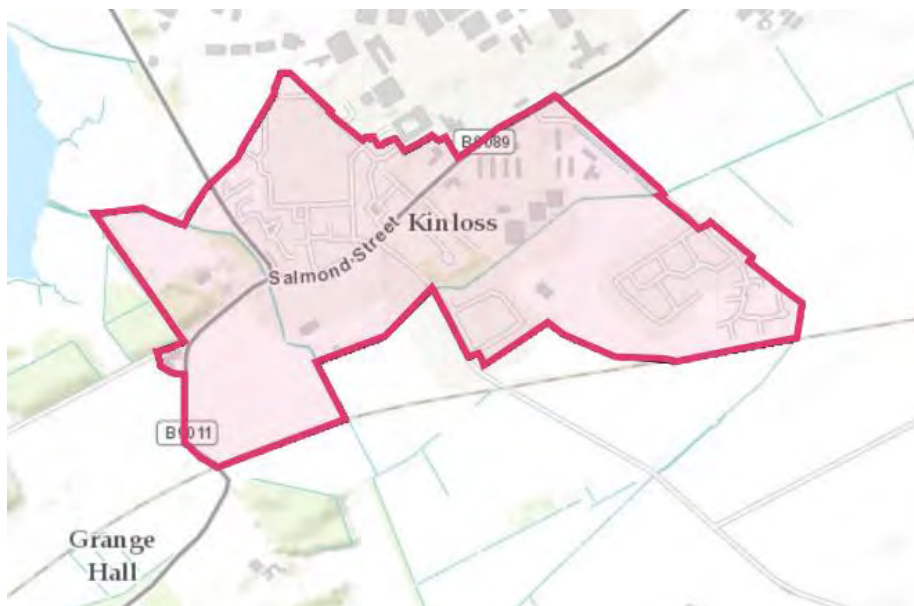


Table of Contents

1	Population Structure	4
1.1	Age profile.....	4
1.2	Marital Status.....	7
2	Identity	8
2.1	Ethnicity.....	8
2.2	Country of Birth.....	9
2.3	Religion.....	10
2.4	Length of residency for residents born overseas.....	10
2.5	Language.....	11
3	Housing	12
3.1	Tenure and House Type.....	13
3.2	Transport.....	15
4	Economy and Labour	16
4.1	Economic Activity.....	16
4.2	Industry.....	17
4.3	Occupation.....	18
4.4	Unemployment.....	20
4.5	Transport.....	20
5	Education	22
5.1	Attainment.....	24
5.1.1	S4 Attainment.....	24
5.1.2	S5 Attainment.....	24
5.2	Leaver Destination.....	25
6	Health and Social care	27
6.1	Health.....	27
6.1.1	Maternity.....	30
6.2	Social Care.....	30
6.3	Hospital Emergency Admissions.....	31
7	Antisocial Behaviour	32
8	Access to Services	34
8.1	Drive time to (2012 data).....	34
8.2	Public transport to (2012 data).....	34
9	Summary	36

Table 1 Age structure of Kinloss.....	4
Table 2 Over–Sixties in 2001 and 2011.....	5
Table 3 16-29 year old in 2001 and 2011	6
Table 4 Marital Status	7
Table 5 Ethnicity	8
Table 6 Country of birth.....	9
Table 7 Religion.....	10
Table 8 Length of residence in the UK	10
Table 9 Household Composition	12
Table 10 Tenure and House Type.....	13
Table 11 Cars per household	15
Table 12 Economic Activity	16
Table 13 Employment by Industry	17
Table 14 Occupation	18
Table 15 Travel to Work.....	21
Table 16 Education Facts.....	22
Table 17 Travel to study.....	22
Table 18 Highest qualification	23
Table 19 S4 Attainment.....	24
Table 20 S5 Education Attainment	24
Table 21 Leaver Destination	25
Table 22 Self-assessed Health.....	27
Table 23 Disability.....	27
Table 24 Long Term health Conditions.....	28
Table 25 Health Condition Prevalence rates by GP Practice.....	28
Table 26 Teenage Pregnancies	30
Table 27 Provision of Unpaid Care.....	30
Table 28 Emergency Admissions	31
Table 29 Number of Antisocial Behaviour Complaints per 1000 population.....	32
Table 30 Crime rates.....	32
Table 31 Drive time (minutes)	34
Table 32 Public Transport time to (Minutes).....	34
Table 33 SIMD 2012 Quintile ranks of the single datazone which covers the Kinloss area..	36
Figure 1 Population profile of Forres and Moray at 2001 and 2011	5
Figure 2 Number of people employed in each of the groupings at 2001 and 2011	19

1 Population Structure

1.1 Age profile

- Kinloss had a population of 1,052 in 2011¹, compared to 1,931 people who lived in the village in 2001. This represents a 45.5% decrease from 2001 to 2011, which is significantly different from the increases in Moray (7.3%) and Scotland (4.6%). The 2011 census, and its derived locality information, is a snapshot taken between the following two events and therefore drastic changes in population can be mapped to this.
- Until 2010 it was the main base for the RAF's fleet of Nimrod MR2 maritime patrol aircraft. It was intended that the MR2 would be replaced by the Nimrod MRA4, but the MRA4 was cancelled in the Strategic Defence and Security Review of October 2010. This meant that Kinloss was no longer required by the RAF. Regular flying operations ceased on 31 July 2011. However, the runways were maintained to be used as a relief landing site, e.g. from RAF Lossiemouth.²
- In November 2011 the Ministry of Defence and 12 (Air Support) Engineer Group announced that 930 Service personnel from 39 Engineer Regiment (Air Support) would move from Waterbeach Barracks, near Cambridge, to Kinloss in summer 2012.^{3,4} First units of 39 Engineer Regiment (Air Support) arrived in June 2012, with the majority expected by July.⁵
- The age profile of Kinloss shows the median age for males was 30 and females was 29 which is 10 & 13 years respectively lower than the national averages.

Table 1 Age structure of Kinloss⁶

Age	Kinloss	Moray	Scotland
% 0 to 4 years old	10.0	5.6	5.5
% 5 to 15 years old	18.9	12.6	11.8
% 16 to 29 years old	21.8	16.1	18.5
% 30 to 44 years old	29.6	19.1	20.0
% 45 to 59 years old	14.0	21.3	21.1

¹ 2011 census

² "Welcome to RAF Kinloss". *Royal Air Force*. 2012. https://en.wikipedia.org/wiki/RAF_Kinloss

³ "First tranche of Army unit moves confirmed". *Ministry of Defence*. https://en.wikipedia.org/wiki/RAF_Kinloss

⁴ "Waterbeach Forward - March 2012". https://en.wikipedia.org/wiki/RAF_Kinloss

⁵ "Moray gets ready to welcome the Army as advance party settles in, 19 June 2012. https://en.wikipedia.org/wiki/RAF_Kinloss

⁶ 2011 census

% 60 to 74 years old	4.1	16.9	15.5
% 75 years old and over	1.7	8.4	7.7

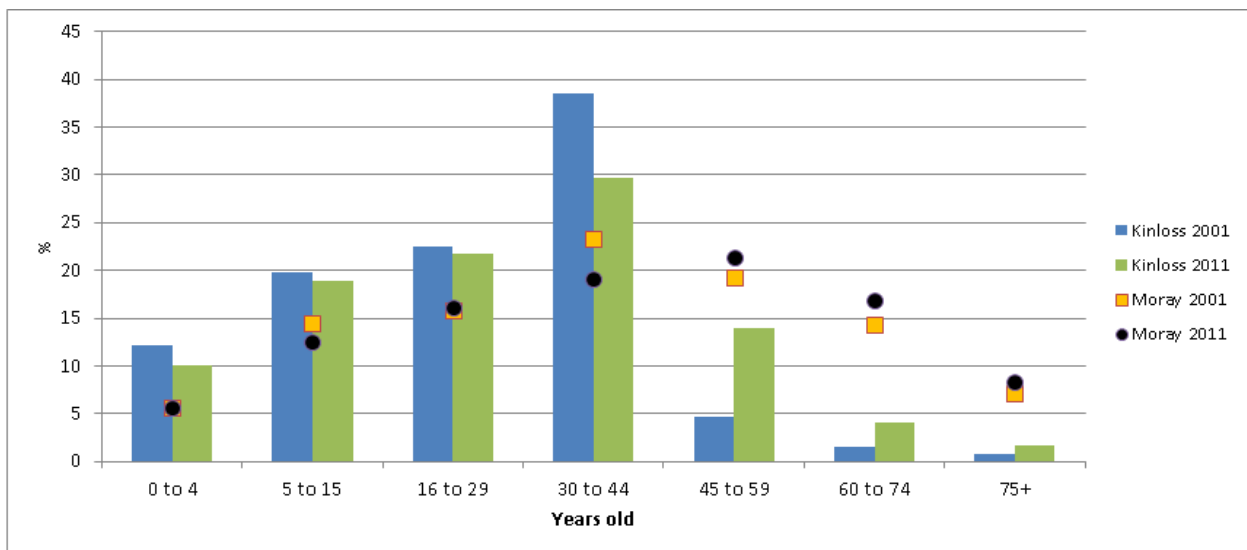
- Table 1 shows that at the time of the 2011 census the Kinloss area had an overwhelmingly younger population where more than half were below the age of 30 years of age and 80% are below 45 years. When compared with both Moray and Scotland the differences are quite stark. In Moray and Scotland just over a third of the population are below the age of 30 and just over half are below the age of 45.
- Both locally and nationally the over 60s population has shown an increase between the two census dates, and despite the low proportion of older people in the population of Kinloss there is still an increase (3.5%) between these two periods. Kinloss had a significantly lower proportion of its population over sixty (5.8%) than Moray (25.3%) and Scotland (23.2%) as table 2 below shows.

Table 2 Over-Sixties in 2001 and 2011⁷

Age	Kinloss	Moray	Scotland
% over sixty 2001	2.3	21.5	21.1
% over sixty 2011	5.8	25.3	23.2

- Figure 1 below illustrates the difference in the population breakdown between Kinloss and Moray, where Kinloss has a much larger proportion of the population in the younger age brackets (0-4, 5-15, 16-29 and 30-44) and subsequently a lower percentage in the older age brackets (45-59, 60-74 and 75+).

Figure 1 Population profile of Kinloss and Moray at 2001 and 2011



⁷ 2011 census

- The biggest differences between 2001 and 2011 in Kinloss was a fall in the proportion of 30-44 year olds, from 38.6% of the population to 29.6% and resultant increases in the proportion of those over 45 years old from 7% to 19.8%. This may have been influenced by the moving of MOD personnel.
- There were relatively more school age children in Kinloss than the rest of Moray in the 2001 census, which would affect the 16-29 year old population ten years later in the 2011 census. However given the changes in MOD personnel, although the proportion of 16-29 year olds in Kinloss is still proportionally higher, the percentage has fallen slightly compared to both Moray and Scotland which showed an increase.

Table 3 16-29 year old in 2001 and 2011

Age	Kinloss	Moray	Scotland
% 16-29 years old 2001	22.5	15.8	17.5
% 16-29 years old 2011	21.8	16.1	18.5

- The trends of the two censuses indicate that the population of Moray is getting older while the percentage of young people staying in the area after leaving school is slightly improving. The reason for the increasing over-sixty demographic is thought to be that people are living longer. In Kinloss, despite the MOD changes, the rate of increase is still lower than for Moray and the relative population.
- The Scottish Government have predicted large rises in spending on health and social care for the elderly (rising from £4.5 billion in 2011/12 to £8 billion in 2031⁸) due to the higher percentage rise in the numbers of over 60s in comparison to those in younger age brackets. Hence, for any rise in the older population in Kinloss, spending would be expected to increase proportionately.

⁸ http://www.audit-scotland.gov.uk/docs/central/2014/nr_140206_resaping_care.pdf

1.2 Marital Status

Table 4 Marital Status⁹

Marital status	Kinloss	Moray	Scotland
All people aged 16 and over	748	76,251	4,379,072
% Single (never married or never registered a same-sex civil partnership)	25.7	28.8	35.4
% Married or in a registered same-sex civil partnership	59.5	51.8	45.4
% Separated (but still legally married or still legally in a same-sex civil partnership)	4.3	3.1	3.2
% Divorced or formerly in a same-sex civil partnership which is now legally dissolved	8.8	8.5	8.2
% Widowed or surviving partner from a same-sex civil partnership	1.7	7.9	7.8

- A higher proportion of residents in Kinloss are married or in a civil partnership compared with the rest of Moray or Scotland.
- Kinloss does have a lower rate of widowed/surviving partner individuals though given the low proportion and numbers of those over 60 this is not surprising. Kinloss also has a slightly higher incidence of people who are divorced or from legally dissolved relationships than Moray though not nearly as high as Findhorn (16.6%).

⁹ 2011 census

2 Identity

2.1 Ethnicity

Table 5 Ethnicity¹⁰

Ethnicity	Kinloss	Moray	Scotland
All people	1,052	93,295	5,295,403
% White - Scottish	54.2	77.7	84.0
% White - Other British	42.1	18.0	7.9
% White - Irish	1.1	0.5	1.0
% White - Polish	0.2	1.1	1.2
% White - Other	1.6	1.7	2.0
% Asian, Asian Scottish or Asian British	0.4	0.6	2.7
% Other ethnic groups	0.4	0.5	1.3
Percentage of households where not all persons are in same ethnic group category	29.8	14.5	10.6

- Kinloss has a lower proportion of white Scottish residents compared with the rest of Moray.
- Over two fifths of residents in Kinloss are white Other British (the highest of any locality in Moray), which is significantly higher than Moray as a whole and over five times the national percentage. This much higher rate will largely be attributable to the close proximity of the military bases at Kinloss and Lossiemouth, and the Findhorn Foundation.
- Almost 39% of employed people in Kinloss worked in public administration or defence (see section 4.1) which is significantly higher than the value for Moray and the national figure. In a comparison with Lossiemouth which has a high percentage (30.7%) and Keith where only 3.3% worked in this field it shows the influence of the MOD bases on the profile of their surrounding areas.
- The cumulative Non Scottish White numbers equate to 45% of the Kinloss population. This figure is significantly higher than Moray (21.3%) and over three times that of Scotland (12.1%) and added to the proportion of Scottish White residents, makes Kinloss a predominantly white population.
- There are a higher percentage of households where residents are not from the same ethnic group compared with both Moray and Scotland; this is likely to be due to the number of households being made up of Scottish and Other British.

¹⁰ 2011 census

2.2 Country of Birth

Table 6 Country of birth¹¹

Country of birth	Kinloss	Moray	Scotland
All people	1,052	93,295	5,295,403
% Scotland	51.3	75.4	83.3
% England	34.6	17.8	8.7
% Wales	4.8	0.9	0.3
% Northern Ireland	1.9	0.7	0.7
% Republic of Ireland	0.3	0.2	0.4
% Other EU countries (inc UK part not specified)	3.6	2.9	2.6
% Other countries	3.5	2.1	4.0

- In total, Kinloss has 92.6% British born residents compared to 94.8% in Moray and 93% in Scotland.
- Within the proportion of British born residents, there was a higher proportion of English, Welsh and Northern Irish born residents, and a balancing lower proportion of Scottish born residents compared with the rest of the localities in Moray and therefore Moray as a whole. For similar reasons to those given in 2.1, the distribution of origin in Moray is greatly influenced by the high numbers of English, Welsh and Northern Irish personnel at, and the location of, the two MOD bases. An additional factor influencing these numbers may be the close proximity of the Findhorn Foundation (see Findhorn Profile - where there is also a high proportion of English born residents (31.7%)).
- There are also higher rates of those born in “other EU countries” and “other countries” where the rates are higher in Kinloss than in the rest of Moray (with the exception of Findhorn) and Scotland.

¹¹ 2011 census

2.3 Religion

Table 7 Religion¹²

Religion	Kinloss	Moray	Scotland
All people	1,052	93,295	5,295,403
% Church of Scotland	20.6	34.0	32.4
% Roman Catholic	5.1	6.6	15.9
% Other Christian	17.7	9.4	5.5
% Muslim	0.0	0.3	1.4
% Other religions	2.5	0.9	1.1
% No religion	47.3	41.2	36.7
% Not stated	6.7	7.7	7.0

- Kinloss has a lower proportion of people stating their religious beliefs are that of the Church of Scotland compared with both Moray and Scotland.
- There is a slightly lower proportion of Roman Catholics in the town compared with Moray and the rate is less than a third of that of Scotland as a whole.
- Kinloss differs slightly from Moray for having a higher rate of those stating their religious beliefs as “Other Christian” or “Other religions”. These categories are represented by 20.2% of the resident population compared with 10.3% for Moray. The Kinloss figure for “Other Christian” is over three times higher than the rate for Scotland (5.5%). This value may be influenced by the percentage of English (influenced by the military bases) in the Kinloss population and also the Findhorn Foundation, where many different spiritual principles are followed and where the rate of “Other Religions” is higher than in the rest of Moray.
- Kinloss also has the highest incidence of “No religion” than any other locality.

2.4 Length of residency for residents born overseas

Table 8 Length of residence in the UK¹³

Length of residence in UK	Kinloss	Moray	Scotland
<i>All people</i>	1,052	93,295	5,295,403
All people born outside the UK	78 (7.4%)	4,883 (5.2%)	369,284 (7.0%)
% Resident in UK for less than 2 years	9.0	14.3	22.1
% Resident in UK for 2 years or more but less than 5 years	21.8	20.2	21.7
% Resident in UK for 5 years or more but less than 10 years	12.8	16.5	18.8
% Resident in UK for 10 years or more	56.4	49.0	37.4

¹² 2011 census

¹³ 2011 census

-
- 7.4% of residents in Kinloss were born outside the United Kingdom which is higher than the Moray average (5.2%) but only slightly higher than the national figures (7.0%).
 - A greater proportion of Kinloss residents born outside the UK (56.4%) have been “resident in the UK for 10 years or more” compared to 49% in Moray and 37.4% in Scotland. Thus, there are lower rates in those “resident in the UK” in each of the other three categories compared to Moray and Scotland. This gives the impression of a more settled population but given the nature of the MOD bases and the Findhorn Foundation, they were not necessarily resident in Kinloss for this period of 10 years, but resident in the UK.
 - Only 9% of Kinloss residents have lived in the United Kingdom for less than two years compared to 14.3% in Moray and 22.1% in Scotland. Compared to other localities e.g. Elgin (15.7%), Kinloss is relatively low though not as low as Keith (5%).

2.5 Language

- Of the 981 residents of Kinloss aged 3 and over, 99.4% speak English well or very well which is slightly higher than national figures. This is unsurprising given the combined percentage, in comparative terms, of residents born in the United Kingdom or born abroad but have been in the UK for over 10 years.
- 20.9% are able to speak Scots¹⁴ which is significantly lower than the national and Moray rates (30.1% and 45.3% respectively) and the lowest rate of any locality in Moray, which perhaps reflects the higher proportion of English and other UK born residents in Kinloss. However, the proportion of those able to speak Gaelic is higher in Kinloss (1.5%) than in any other locality in Moray and significantly higher than Findhorn (0.3%) and therefore higher than Moray as a whole and also higher than nationally (0.7%).

¹⁴ Scots is the collective name for Scottish dialects

3 Housing

Household composition is important information to determine local services provided by the Council, its partners and the third sector.

Table 9 Household Composition¹⁵

Household Composition	Kinloss	Moray	Scotland
Total number of households (with residents)	393	40,062	2,372,777
% One person household - Aged 65 or over	2.8	13.7	13.1
% One person household - Aged under 65	16.5	16.4	21.6
% One family only: Lone parent: With dependent children	7.1	5.7	7.2
% One family only: Lone parent: All children non-dependent	1.3	3.5	3.9
% One family only: Married or same-sex civil partnership couple: With dependent children	34.6	15.9	13.6
% One family only: Married or same-sex civil partnership couple: No dependent children	17.6	21.7	18.4
% One family only: Cohabiting couple: With dependent children	3.8	4.0	3.7
% One family only: Cohabiting couple: No dependent children	8.7	5.5	5.5
% Other households: All full-time students	0.0	0.0	0.9
% Other households: All aged 65 and over	2.3	9.7	7.8
% Other households: Other	5.3	3.9	4.4

- There are 393 households in Kinloss with an average of 2.7 residents per household which is marginally higher than the 2.3 residents per household in Moray and 2.2 in Scotland.
- There is a lower proportion of one-person-over-65 households in Kinloss (2.8%) compared with that of Moray (13.7%) and Scotland (13.1%), the lowest of any locality in Moray.
- Over-65 households in Kinloss account for only 5.1% of all households compared with 23.4% for Moray and 20.9% for Scotland. Again the lowest of any locality in Moray.
- In Kinloss there is a higher proportion of households with dependent children (45.5%) compared with both Moray (25.6%) and Scotland (24.5%). Also there is a slightly higher rate of lone parent households with dependent children in Kinloss (7.1%) compared to Moray (5.7%) though this is close to the national average (7.2%).

¹⁵ 2011 census

- Kinloss is significantly higher in married or same-sex civil partnership couples with dependent children (34.6%) with more than double the percentage compared to Moray (15.9) and Scotland (13.6%), and the highest percentage of any locality.
- The proportion of cohabiting couples with no dependent children is higher in Kinloss with 8.7% compared to 5.5% in both Moray and Scotland, and the highest percentage of any locality
- One-person households in Kinloss account for 19.3% of all households, which is significantly lower than Moray (30.1%) or Scotland (34.7%).

3.1 Tenure and House Type

Table 10 Tenure and House Type¹⁶

Tenure	Kinloss	Moray	Scotland
Total number of households (with residents)	393	40,062	2,372,777
% Owned	52.7	65.9	62.0
% Rented from Council	5.3	14.1	13.2
% Other social rented	6.9	5.2	11.1
% Private rented	33.8	12.6	12.4
% Living rent free	1.3	2.1	1.3
% House or bungalow	91.1	87.0	63.4
% Detached	18.3	37.2	21.9
% Semi - detached	47.6	31.4	22.8
% Terraced house (including end-terrace)	25.2	18.4	18.6
% Flat or maisonette or apartment	5.1	12.6	36.4
% Caravan or other mobile or temporary structure	3.8	0.4	0.2

- 52.7% of all properties in Kinloss (one of the lowest percentages in Moray) are owned by the occupants, this value is lower than the values for Moray (65.9%), Scotland (62%), and significantly lower than Hopeman (82%), Findhorn (63.6%), or Aberlour (70.6%), but still higher than areas like Logie (48.9%).
- Only 5.3% of housing in the town is rented from the Council which is a higher proportion than for Findhorn (3.6%), but significantly lower than Moray (14.1%) and Scotland (13.2%) and almost half the rate of a similarly sized locality, Aberlour (10.4%).

¹⁶ 2011 census

-
- On the other hand, over a third of Kinloss households are private rented (33.8%) compared to Moray (12.6%) or national (12.4%). This is still lower than Logie (42.5%) but almost three times higher than Aberlour (11.7%).
 - “Other social rented” is also higher in Kinloss (6.9%) than Moray (5.2%), but not as high as Fochabers (8.9%) or Scotland (11.1%).
 - Moray has significantly less flats, maisonettes, or apartments (12.6%) than the rest of Scotland (36.4%); however in Kinloss only 5.1% of its properties are of this type compared to 11.4% in Aberlour.
 - Kinloss, with 91.1%, has a larger proportion of houses and bungalows than Moray at 87.0%, but both are much higher than the national average (63.4%).
 - Kinloss (47.6%) has the second highest proportion of semi-detached housing than either Moray or Scotland (18.4% and 18.6% respectively), but still lower than Portgordon (52.7%).
 - Less than a fifth (18.3%) of the Kinloss properties were detached, which proportionally is lower than the national average (21.9%) and significantly lower than the Moray average (37.2%). As detached properties generally attract greater value and with the lower proportion of this type of property in Kinloss, it is no surprise that the average house prices in Kinloss¹⁷ (£125,667) are lower than in Moray¹⁸ (£152,716). At time of writing, the value of Kinloss properties had risen (1.49%) over the previous 12 months compared to Moray which had fallen (by 1.93%).
 - In the past year a higher percentage of housing stock, 28 properties (13.5% of owned properties), have been sold in Kinloss¹⁹ in comparison to 1,409 (5.34%) in Moray²⁰. It may be that other areas are restricted in the selling of council houses due to ‘protected area status’, or that there is more movement and demand in Kinloss with the MOD re-posting people.

¹⁷ <http://www.zoopla.co.uk/market/kinloss/?q=kinloss> (values quoted at 24/02/2016)

¹⁸ <http://www.zoopla.co.uk/market/moray/?q=moray> (values quoted at 24/02/2016)

¹⁹ <http://www.zoopla.co.uk/market/kinloss/?q=kinloss> (values quoted at 24/02/2016)

²⁰ <http://www.zoopla.co.uk/market/moray/?q=moray> (values quoted at 24/02/2016)

3.2 Transport²¹

Table 11 Cars per household

Car or van availability	Kinloss	Moray	Scotland
Total number of households (with residents)	393	40,062	2,372,777
% No car or van	8.9	19.9	30.5
% 1 car or van	48.9	46.9	42.2
% 2 cars or vans	34.4	25.5	21.6
% 3 or more cars or vans	7.9	7.7	5.6

- As the above table shows, Kinloss has a higher proportion of households (7.9%) with 3 or more cars compared to Scotland or Moray with 5.6% and 7.7% respectively. Kinloss (34.4%) also has a significantly higher proportion of 2 vehicles per household compared to Moray (25.5%) or Scotland (21.6%). Combined, Kinloss (with 42.3%) has one of the highest rates of households with 2 or more cars in Moray, though not as high as Logie (48.9%).
- In Kinloss there is a significantly smaller proportion (8.9%) of households with no vehicle compared to the Moray average (19.9%) or Scotland (30.5%).
- Kinloss has a slightly higher proportion (48.9%) of households with a single vehicle compared to Moray (46.9%) or Scotland (42.2%).

²¹ 2011 census

4 Economy and Labour

4.1 Economic Activity

Table 12 Economic Activity²²

Economic Activity	Kinloss	Moray	Scotland
All persons 16 to 74	730	68,410	3,970,530
% Economically active	78.6	71.5	69.0
% Employees - part-time	12.7	15.7	13.3
% Employees - full-time	53.2	41.4	39.6
% Self-employed	5.1	8.4	7.5
% Unemployed	6.6	3.9	4.8
% Full-time student - employed	0.5	1.7	2.9
% Full-time student - unemployed	0.5	0.4	0.8
% Economically inactive	21.4	28.5	31.0
% Retired	5.1	16.3	14.9
% Student	4.2	3.4	5.5
% Looking after home or family	7.8	3.9	3.6
% Long-term sick or disabled	2.5	3.2	5.1
% Other	1.8	1.5	1.9

- Kinloss (78.6%) has a higher level of economically active adults compared with Scotland (69%) and Moray (71.5%).
- The cumulative values of all Economically Active people in employment, as employees (full or part-time), in Kinloss (65.9%) show that there is a higher proportion of people being employed than in Moray (57.1%) or in Scotland (52.9%). This is the highest locality in Moray with Lossiemouth (64.9%) coming a close second.
- Since the 2001 census the percentage of people in Kinloss economically active in full time employment has reduced from 62.6% to 53.2% in 2011, and in the same period the proportion in part-time employment has only fractionally increased.
- The proportion of self-employed has increased from 2.23% to 5.1%, and the retired and unemployed proportions have similarly increased.
- The higher percentage of people being employed from Kinloss is countered by the lower proportion that are retired (5.1% compared to 16.3% in Moray and 14.9% in Scotland), and the slightly higher level of unemployment (6.6% compared to 3.9% in Moray and 4.8% in Scotland).

²² 2011 census

- The lower proportion of retired people in Kinloss compared with Moray and Scotland is likely to be a reflection of the lower proportion of people over the age of 65 residing in Kinloss.
- The rate of long-term sick and disabled people in Kinloss (2.5%) is lower than the Scottish rate (5.1%) and Moray rate (3.2%).
- Kinloss has a significantly higher rate of unemployment (6.6%), compared to Moray (3.9%) and Scotland (4.8%).
- Also, Kinloss (with 7.8%) has twice the proportional rate of residents “looking after home or family” compared to Moray (3.9%) or Scotland (3.6%).

4.2 Industry

Table 13 Employment by Industry²³

Industry	Kinloss	Moray	Scotland
All persons aged 16 to 74 in employment	522	45,983	2,516,895
% A. Agriculture, forestry and fishing	1.3	3.2	1.7
% B. Mining and quarrying	1.0	2.9	1.4
% C. Manufacturing	5.7	12.1	8.0
% D. Electricity, gas, steam and air conditioning supply	0.0	0.3	0.8
% E. Water supply; sewage, waste management and remediation activities	0.8	0.6	0.8
% F. Construction	5.9	9.1	8.0
% G. Wholesale and retail trade; repair of motor vehicles and motorcycles	10.3	14.8	15.0
% H. Transport and storage	2.5	4.2	5.0
% I. Accommodation and food service activities	5.4	6.0	6.3
% J. Information and communication	1.5	1.1	2.7
% K. Financial and insurance activities	0.8	1.2	4.5
% L. Real estate activities	0.6	1.1	1.2
% M. Professional scientific and technical activities	2.3	3.5	5.2
% N. Administrative and support service activities	3.8	3.2	4.3
% O. Public administration and defence; compulsory social security	38.9	11.9	7.0
% P. Education	5.6	7.9	8.4
% Q. Human health and social work activities	11.5	12.7	15.0
% R, S, T, U. Other	2.1	4.1	4.9

²³ 2011 census

- The main Industries for employment for the residents of Kinloss are within: “Public administration and defence”, “Human health and social work activities” and “Wholesale and retail trade; repair of motor vehicles and motorcycles” with the percentages employed in these areas 38.9%, 11.5% and 10.3% respectively. The percentages employed in Kinloss within “Public administration and defence” were over 3 times higher than Moray (11.9%) and over 5¹/₂ times higher than Scotland (7%). The other two industries are both lower in Kinloss than in Moray.
- The next biggest differences between Moray as a whole and Kinloss were the proportion of those employed in “Manufacturing”, “Wholesale and retail trade; repair of motor vehicles and motorcycles” and “Construction” where the differences were 6.4%, 4.5% and 3.2% (respectively) lower in Kinloss than in Moray in each of these industry sectors.
- Conversely, the lower proportion of those employed in “Manufacturing” in Kinloss is not surprising as the Moray figure includes some major manufacturing bases e.g. Dufftown (29.7%), Aberlour (35%), and Keith (17.7%) which have no equivalent in Kinloss.
- The proportion of those employed in “Electricity, gas, steam and air conditioning supply”, “Water supply; sewage, waste management and remediation activities”, “Financial and insurance activities” and “Real estate activities” were all below 1%.

4.3 Occupation

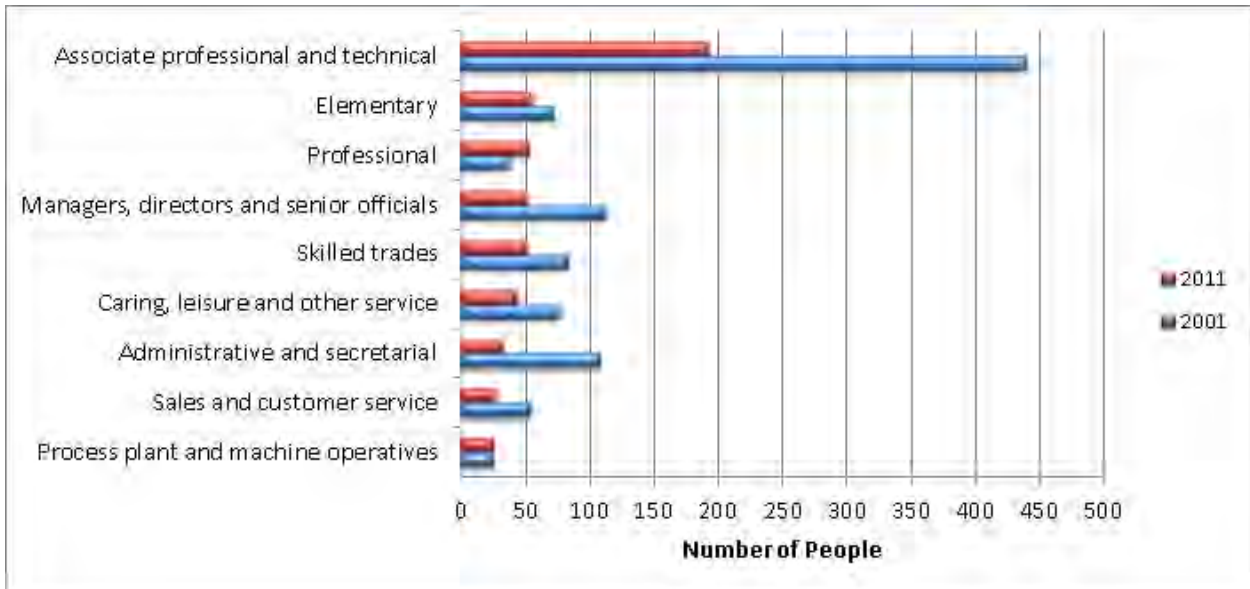
Table 14 Occupation²⁴

Occupation	Kinloss	Moray	Scotland
All persons 16 to 74 in employment	522	45,983	2,516,895
% Managers, directors and senior officials	9.8	7.6	8.4
% Professional occupations	10.0	11.4	16.8
% Associate professional and technical occupations	36.6	14.7	12.6
% Administrative and secretarial occupations	6.1	8.4	11.4
% Skilled trades occupations	9.6	16.6	12.5
% Caring, leisure and other service occupations	8.0	10.0	9.7
% Sales and customer service occupations	5.0	8.1	9.3
% Process, plant and machine operatives	4.6	10.4	7.7
% Elementary occupations	10.3	12.8	11.6

²⁴ 2011 census

- The top three highest income occupation groupings (see first three in table 14 above) accounted for 56.4% of the employed working population of Kinloss which is significantly higher than Moray (33.7%) or Scotland (37.8%) and is the highest of any locality in Moray.

Figure 2 Number of people employed in each of the groupings at 2001 and 2011



- The biggest difference between the Moray area and Kinloss was the proportion of “Associate professional and technical occupations”, with Kinloss being higher (by almost 2¹/₂ times in 2011) than Moray which echoes the higher proportion of people in the “Public administration and defence; compulsory social security” category in the Industry sector in Kinloss compared to the other areas of Moray (see section 4.1 above). This is not surprising with the proximity of two MOD bases, one being in Kinloss itself. Figure 2 above also shows that with a change in population a large proportion would have been associate professional and technical leaving between the changeover between RAF and Army.
- The other main area of difference was a lower proportion of “Skilled trades occupations” and “Process, plant and machine operatives” in Kinloss, again reflecting a lower level of manufacturing in Kinloss (4.6%) compared to Moray (10.4%).

-
- Overall, “Associate professional and technical occupations” accounted for the highest proportion of those employed from Kinloss (36.6%) compared to Moray where “Skilled trades occupations” accounted for the highest proportion. Nationally, the highest proportion of those employed is found in the “Professional occupations” (16.8%), however these only account for 10% and 11.4% in Kinloss and Moray respectively.

4.4 Unemployment

- In the 2011 census, of all persons in Kinloss aged 16-74, 6.6% (48 people) were unemployed compared to 3.9% in Moray and 4.8% of people nationally. In Kinloss, this equates to a rise of 2.3% from the 2001 census figure of 4.3% (56 people) though this in part may be through a fall in population (described in section 1.1).
- In Kinloss, of those aged 16 to 74 who were unemployed, 25% were aged 16 to 24 and 12.5% were aged 50 to 74. Nationally (30.2% and 18.4% respectively) and in Moray (34.7% and 19.9% respectively) these figures were both higher, but the proportion of these age groups in Kinloss are lower than both national and Moray.
- Of those listed as unemployed in Kinloss, 4.2% have “Never Worked”, which is significantly lower than Moray (9.1%), Scotland (13.9%) and Findhorn (9.5%). However, Kinloss (with 18.8%) seems to have a higher proportion of long term unemployed (last worked before 2005) compared to Moray (7.9%) or Scotland (10.7%) and a resultant lower proportion who last worked in 2010 to 2011 (i.e. in the last 12 months before the census).

4.5 Transport

- Kinloss has a similar level of residents travelling to work by car (64%), to both Moray and Scotland where nearly two thirds of people use this mode of transport.
- A higher percentage of Kinloss residents use “other” modes of transport to travel to their workplace, some of these methods may include; bicycle, motorbike etc. A lower proportion of Kinloss residents work from home (10%), in comparison with Moray (12.1%) and Scotland (10.8%) but given the proximity to the industries and occupations involved i.e. MOD base personnel, this perhaps is not surprising and similar rates are found in Forres and Lossiemouth (both around 10%).

Table 15 Travel to Work²⁵

Travel to work	Kinloss	Moray	Scotland
All persons aged 16 to 74 who were in employment (excluding full-time students)	518	44,816	2,400,925
% Car (including passengers car pools and taxis)	64.1	63.7	62.4
% Train	1.9	2.2	3.7
% Bus	3.9	3.4	10.0
% On foot	7.1	12.2	9.9
% Other	12.9	6.3	3.1
% Works mainly at or from home	10.0	12.1	10.8

- Between the 2001 and 2011 censuses, the percentage using cars increased to 64% from 50% coming more in line with Moray as a whole.
- Walking to work was not specifically mentioned in the 2001 census but “other “methods, which would have included walking, reduced from 44% in 2001 to 20% in 2011.
- Additionally, the working from home rate increased by 7.3%, up from 2.7% to 10% between 2001 and 2011.
- Kinloss shows close similarities to Forres and Lossiemouth in the each of the categories (taking “on foot” and “other” together), while there are distinct differences between Kinloss and Findhorn e.g. working at home in Findhorn (24.3%) was more than double the Kinloss rate (10%).

²⁵ 2011 census

5 Education

Table 16 Education Facts²⁶

Interesting facts	Kinloss	Moray	Scotland
Percentage 16 to 17 year olds in education	79.3	76.6	79.8
Percentage of households where no person aged 16 to 64 has a highest level of qualification of Level 2 or above, or no person aged 16-18 is a full-time student	26.0	49.0	47.2

- Kinloss has a slightly higher proportion of 16-17 year olds in full time education than the rest of Moray and is only fractionally lower than Scotland.
- With a rate of 79.3%, Kinloss shows a lower proportion of 16-17 year olds in education than Hopeman (88.9%) but higher than Findhorn, Portgordon or Aberlour (72.2%, 64.3%, and 71.4% respectively).
- Kinloss (with 26%) has a significantly lower proportion of households, compared with both Moray (49%) and Scotland (47.2%), where no one holds a national level qualification above level 2 (SCE Higher or similar) or no person aged 16-18 is a full-time student. This is significantly lower than any other locality in Moray.

Table 17 Travel to study²⁷

Travel to study	Kinloss	Moray	Scotland
All people aged 4 and over studying	242	15,771	996,282
% Car (including passengers car pools and taxis)	23.1	23.2	22.3
% Train	0.4	1.0	2.9
% Bus	28.9	20.3	21.5
% On foot	24.8	41.5	39.1
% Other	9.1	2.0	1.7
% Studies mainly at or from home	13.6	12.0	12.4

- In Kinloss a significantly higher proportion (9.1%) of pupils/students used “other” transport options to get to school compared to the rest of Scotland (1.7%) or Moray (2%) or any other locality in Moray.

²⁶ 2011 census

²⁷ 2011 census

- However, the proportion of pupils/students that walked to school in Kinloss (24.8%) was significantly lower than either Moray (41.5%) or Scotland (39.1%).
- 23% travel to school by car; this is similar to both the Moray and national percentages.
- The proportion in Kinloss (28.9%) travelling by bus is also higher than Moray (20.3%), Scotland (21.5%), or Aberlour (11.8%), but lower than Rothes (37.4%) or Portgordon (31.6%).

Table 18 Highest qualification²⁸

Highest qualification ²⁹	Kinloss	Moray	Scotland
All persons aged 16 and over	748	76,251	4,379,072
% With no qualifications	11.2	26.7	26.8
% Highest qualification attained - Level 1	27.9	26.3	23.1
% Highest qualification attained - Level 2	18.4	14.4	14.3
% Highest qualification attained - Level 3	14.0	9.9	9.7
% Highest qualification attained - Level 4 and above	28.3	22.7	26.1

- The proportion of persons aged 16 and over in Kinloss without any qualifications (11.2%), is significantly lower than Moray (26.7%) and National (26.8%) levels.
- Kinloss (with 28.3%) has a significantly lower proportion having attained a qualification at degree level or beyond compared to Findhorn (48.1%). However, compared with Moray (22.7%), Kinloss was significantly higher and is slightly higher than the national figure (26.1%). In this respect, Kinloss is also significantly higher than Rothes (15.1%).
- Kinloss also has the highest proportions of its 16+ population having attained qualifications at level 2 or 3 than any other location in Moray and higher than national by approximately 4-5% in each category.

²⁸ Census 2011 <http://www.scotlandscensus.gov.uk/variables-classification/highest-level-qualification>

²⁹ The following table shows what the levels used in the census mean.

Level 1	Standard Grade (equivalent or above)	Level 2	Higher (equivalent or above)
Level 3	HNC (equivalent or above)	Level 4	Degree (equivalent or above)

5.1 Attainment

5.1.1 S4 Attainment

Table 19 S4 Attainment³⁰

Name	Kinloss	Moray	Scotland
Total S4 Students from 2008/9 to 2012/13	55	5,499	280,909
S4: No pupils with 5 awards at SCQF level 5 and above	14	2,161	103,795
Percentage of pupils with 5 awards at SCQF level 5 and above	25.5%	39.3%	36.9%
Average S4 Tariff (approx.)	152	198	185

- The average S4 Tariff score for Kinloss, which takes into account the number of awards achieved by each pupil and their grades, was lower than Moray's or national over the 5 years between 2008/09 and 2012/13.
- The tariff score also suggests that S4 attainment in Kinloss (152) is significantly lower than Keith (263).
- The percentage of S4 pupils from Kinloss who attained five or more level-5 awards (Standard Grade Credit or Intermediate 2 level) is also significantly lower than the national and Moray rates.

5.1.2 S5 Attainment

Table 20 S5 Education Attainment³¹

Name	Kinloss	Moray	Scotland
Total Students for S5	37	4,380	235,893
S5: No pupils with 1 award at SCQF level 6 and above : 2008/9 - 2012/13	26	1,996	101,481
S5: Percentage of pupils with 1 award at SCQF level 6 and above : 2008/9 - 2012/13	70.3%	45.6%	43.0%
S5: No pupils with 3 awards at SCQF level 6 and above : 2008/9 - 2012/13	15	1,399	74,789
S5: Percentage of pupils with 3 awards at SCQF level 6 and above : 2008/9 - 2012/13	40.5%	31.9%	31.7%
S5: No pupils with 5 awards at SCQF level 6 and above : 2008/9 - 2012/13	4	595	34667
S5: Percentage of pupils with 5 awards at SCQF level 6 and above : 2008/9 - 2012/13	10.8%	13.6%	14.7%
5 year Tariff average (approx)	326	365	347

³⁰ Data for the 5 year period from 2008/09-2012/13, Source – Scottish Neighbourhood Statistics - <http://www.sns.gov.uk>

³¹ Data for the 5 year period from 2008/09-2012/13, Source – Scottish Neighbourhood Statistics - <http://www.sns.gov.uk>

- Because each year there is a low number of S5 pupils sitting exams the data provided uses a 5 year period from 2008/09-2012/13 to gain a larger sample size to explore how attainment in Kinloss compares with the rest of Moray and Scotland.
- Across the first two attainment areas, Kinloss has a larger percentage of pupils achieving one or three awards at “level 6 or above” than Moray and Scotland. However Kinloss (with 10.8%) has a lower percentage of pupils attaining 5 awards at that level compared to Moray (13.6%) or Scotland (14.7%).
- Compared to other areas for attaining 1 or 3 awards at level 6 or above, Kinloss with 70.3% and 40.5% of pupils is higher than Findhorn or Aberlour, but for those attaining 5 awards at this level, Aberlour (19.1%) and Findhorn (32.0%) were significantly higher than Kinloss (10.8%).
- Four out of 37 S5 pupils from Kinloss over the 5 years achieved five or more level 6 (Higher Grade) awards.
- The S5 tariff scores in Kinloss were below that of Scotland and Moray, on average.

5.2 Leaver Destination

Table 21 Leaver Destination³²

Name	Kinloss	Moray	Scotland
Total leavers	39	5,237	265,363
Higher Education	25.6%	33.3%	36.0%
Further Education	33.3%	27.2%	27.1%
Training	2.6%	1.5%	5.7%
Employment	28.2%	28.7%	19.7%
Total Positive	89.7%	90.7%	88.4%
Unemployment and seeking employment or training	7.7%	7.4%	9.6%
Unemployed not seeking employment or training	2.6%	1.7%	1.3%
Total Negative Destination	10.3%	9.1%	10.9%
Unknown	0.0%	0.2%	0.6%

³² Data for the 5 year period from 2008/09-2012/13, Source – Scottish Neighbourhood Statistics - <http://www.sns.gov.uk>

-
- Kinloss has a higher proportion of pupils entering Further Education (33.3%) than the rest of Moray (27.2%) or Scotland (27.1%), but a lower proportion entering Higher Education (25.6%) than Moray or National.
 - The proportion of pupils entering employment from Kinloss (28.2%) is higher than the national (19.7%) but slightly lower than Moray (28.7%).
 - Kinloss has a slightly higher level of positive destinations to Scotland, however Kinloss is slightly lower than Moray, and the difference is accounted for in a slightly higher level of unemployment (see section 4.3), though not as high as Forres, Dufftown or Aberlour.
 - Many of the other areas in Moray do not have any training, in Kinloss this is not the case with 2.6% of leavers accounted for in this destination and in this aspect it is similar to Forres.

6 Health and Social care

6.1 Health

Table 22 Self-assessed Health³³

	Kinloss	Moray	Scotland
All people	1,052	93,295	5,295,403
% Very good	69.3	53.7	52.5
% Good	23.6	31.3	29.7
% Fair	5.5	11.1	12.2
% Bad	1.2	2.9	4.3
% Very bad	0.4	0.9	1.3

- The table above shows the similarity between Moray and Scotland as a whole with the only notable difference between these and Kinloss being a higher proportion of Kinloss in the “Very good” category.
- Almost 93% of Kinloss residents describe themselves as being of either “Very good” or “Good” health compared to 85% in Moray and 82.2% in Scotland but this is not surprising given the younger demographic in Kinloss.
- The combined proportion of residents describing themselves as being in bad or very bad health is 1.6%, lower than the national rate (5.6%) and the Moray rate (3.8%).

Table 23 Disability³⁴

Long-term health problem or disability	Kinloss	Moray	Scotland
All people	1,052	93,295	5,295,403
% Limited a lot	3.4	7.6	9.6
% Limited a little	3.9	10.2	10.1
% Not limited	92.7	82.3	80.4

- 7.3% (77 people) of Kinloss residents stated they were limited a little or a lot by a disability or long term health issue, lower than the Moray or National figures.

³³ 2011 census

³⁴ 2011 census

Table 24 Long Term Health Conditions³⁵

Long-term health condition	Kinloss	Moray	Scotland
All people	1,052	93,295	5,295,403
% With no condition	82.8	70.9	70.1
% With one or more long-term health conditions	17.2	29.1	29.9
% With deafness or partial hearing loss	3.0	7.0	6.6
% With blindness or partial sight loss	1.0	2.5	2.4
% With learning disability (for example, Down's Syndrome)	0.1	0.5	0.5
% With learning difficulty (for example, dyslexia)	2.0	2.0	2.0
% With developmental disorder (for example, Autistic Spectrum Disorder, Asperger's Syndrome)	1.2	0.6	0.6
% With physical disability	2.2	5.8	6.7
% With mental health condition	2.4	3.2	4.4
% With other condition	9.8	18.2	18.7

- The long-term health of Kinloss residents is considerably better than both Moray and Scotland, with 82.8% of residents declaring no long-term conditions compared to Moray (70.9%) or Scotland (70.1%). Of all the conditions listed in table 24 above, the only condition that rates higher than both Moray and Scotland is of those people affected by developmental disorder. Whilst the proportion is small in relative terms it is twice the rate of Moray and Scotland.
- The most prevalent condition in the table above was deafness or partial hearing loss (3% compared to 7% in Moray), followed by mental health condition (2.4%) and physical disability (2.2%).

Table 25 Health Condition Prevalence rates by GP Practice³⁶

Health Condition Prevalence Rates (per 100 patients)	Kinloss (Forres Centre)	Moray	Scotland
"Smoking" (conditions assessed for smoking)	24.33	25.52	24.74
Hypertension	13.65	14.84	13.94
Obesity	10.74	10.53	8.05
Depression	7.41	3.58	5.5
Diabetes	5.30	5.49	4.79

³⁵ 2011 census

³⁶ https://isdscotland.scot.nhs.uk/Health-Topics/General-Practice/Publications/2014-09-30/QOF_Scot_201314_Practice_prevalencecv2.xls

-
- The table above shows the 5 most common health conditions recorded at the Forres Health & Care Centre, which is served by two GP Practices, Forres Health Centre, and Varis Medical Practice. The data collection is from March 2013 to April 2014 through the NHS Quality & Outcomes Framework. The two practices serve a large area that covers Forres and surrounding areas including Kinloss, with a total GP patient roll of 15,638 (January 2013). For comparison, the Moray and Scotland rates have been included.
 - The top three health conditions reported through GP Practices are the same for Kinloss/Forres, Moray and nationally. The Forres Health & Care Centre shows a lower incidence relating to smoking condition and hypertension compared to Moray.
 - The rates of depression at the Forres Health & Care Centre are the highest in Moray and are more than double the rate for Moray and over a third higher than the national rate. While the rates for mental health in Forres/Kinloss are not the highest in Moray, they are among the highest and above the Moray and national averages.
 - Diabetes rates in Forres/Kinloss are slightly lower than the Moray rate but remain higher than the national rates, while the obesity rates in Kinloss (10.74 per 100) are slightly higher than the Moray (10.53) rate and significantly higher (over 33% higher) than the national (8.01).
 - Of the 24 health conditions recorded at GP Practices through the NHS Quality & Outcomes Framework, Forres Health & Care Centre had 12 conditions where the raw prevalence rates per 100 patients were above the national rate, these were: Obesity; Depression; Diabetes; Cardiovascular Disease (2.63); Heart Failure (0.94); Hypothyroidism (5.35); Mental Health (0.91); Chronic Kidney Disease (4.44); Cancer (2.20); Atrial Fibrillation (1.96); Peripheral Arterial Disease (1.09); and Rheumatoid Arthritis (0.68).

6.1.1 Maternity

Table 26 Teenage Pregnancies³⁷

Name	Moray	Scotland
Teenage pregnancies aged under 16, rate per 1000 women aged 13_15. : 2009-2011	5.6	6.6
Teenage pregnancies aged under 18, rate per 1000 women aged 15_17. : 2009-2011	27.5	34.4
Teenage pregnancies aged under 20, rate per 1000 women aged 15_19. : 2009-2011	42.7	49.0

- There are relatively fewer teenage pregnancies in Moray than for the rest of Scotland. There is a decreasing trend for teenage pregnancies in Moray.
- Data for Kinloss teenage pregnancies is not freely available. However in the six years between 2006 and 2011 there were 3 recorded births to a first time mother³⁸ where the mother was under the age of twenty and living in Kinloss.
- Smoking during pregnancy: There were 11 incidents of women from Kinloss recorded as being smokers (at the time of booking) in the six years from 2008-13. The percentage of pregnant women who smoked at booking was 21.2% for Moray and 20% for Scotland (2013). For Kinloss the percentage for “Findhorn, Kinloss and Pluscarden Valley”³⁹ was much lower at 9.8% and is significantly lower than “Buckie West and Mains of Buckie” which had the highest rate in Moray at 36.4%.

6.2 Social Care

Table 27 Provision of Unpaid Care⁴⁰

Provision of unpaid care	Kinloss	Moray	Scotland
All people	1,052	93,295	5,295,403
% Not providing care	94.9	91.6	90.7
% Providing 1 to 19 hours of care a week	2.4	4.8	5.2
% Providing 20 to 34 hours of care a week	0.7	0.7	0.9
% Providing 35 to 49 hours of care a week	0.5	0.6	0.8
% Providing 50 or more hours of care a week	1.6	2.2	2.5

- 55 Kinloss residents (5.2%) provide care to either a friend or family member.

³⁷ Source – Scottish Neighbourhood Statistics - <http://www.sns.gov.uk>

³⁸ <http://www.sns.gov.uk/>

³⁹ <https://scotpho.nhs.uk/scotpho/homeAction.do>

⁴⁰ 2011 census

- 46% of those who carry out unpaid care in Kinloss provide 1 to 19 hours of care a week.
- 17 residents in Kinloss (1.6%) provide over 50 hours of care per week, which is lower than the Moray or national rate.

6.3 Hospital Emergency Admissions

Table 28 Emergency Admissions⁴¹

	Kinloss	Moray	Scotland
Emergency admissions - both sexes - all ages - rate/100,000 : 2012	5,779	7,476	10,194
Emergency admissions - both sexes - aged 65 and over - rate/100,000 : 2012	32,035	16,945	25,493

- The rate of Emergency Admissions (for all ages) in Kinloss is significantly lower than the rest of Moray and the national average. For all ages, residents of Scotland are 1.76 times more likely to be admitted to hospital as an emergency than those from Kinloss.
- The Kinloss residents who are 65 and over, are more likely to be admitted to hospital as an emergency than nationally or those in the rest of Moray. This number is skewed due to the low proportion of 65+ residents in the Kinloss population.
- Comparing Kinloss residents of all ages with those aged 65 and over, the rates for those over 65 are 5.5 times higher than the overall Kinloss population. This number is skewed due to the low proportion of 65+ residents in the Kinloss population and a low emergency admission rate overall with a total of only 69 emergency admissions out of a population of 1,052 and only 19 emergency admissions attributed to residents over 65.

⁴¹ Source – Scottish Neighbourhood Statistics - <http://www.sns.gov.uk>

7 Antisocial Behaviour

Table 29 Number of Antisocial Behaviour Complaints per 1000 population⁴²

Type of Complaint	Kinloss	Moray
Noise	5.7	12.2
Rowdy Behaviour	2.4	4.0
Neighbour Dispute	1.9	3.9
Graffiti	0.0	0.3
Vandalism	6.7	8.1
Litter	0.5	1.7
Fly Tipping	0.0	3.5
Dog Fouling	1.4	1.3

- Kinloss had a much lower rate of incidents of Anti-Social Behaviour compared to Moray as a whole (18.5 to 34.9 per 1000 population per year).
- Across the majority of complaint types, Kinloss was considerably lower than the Moray averages with the exception of Dog Fouling where the rate was similar to Moray.
- In comparison to other areas within Moray, Kinloss' level of littering is slightly higher than many other areas including Forres, and the level of vandalism in Kinloss (6.7 per 1,000 pop) is similar to that in Keith (6.6 per 1,000 pop).

Table 30 Crime rates⁴³

Year	Number of Crimes per 1,000 residents per year	
	Kinloss	Moray
2012/13	42.8	95.7
2013/14	77.0	101.1

⁴² Average number of complaints per year over the two years 2012/13 and 2013/14 – from police records

⁴³ From police records of reported crimes

-
- From the above table, Kinloss' crime rates for both years were significantly less than Moray as a whole and were less than half the rate in 2012/13 compared to Moray. However, the rate in Kinloss in 2013/14 was getting closer to the Moray rate. The main reason for the rise in Kinloss numbers and rates was a rise in the number of incidents of "Offences relating to Motor Vehicles", "Crimes of Dishonesty" and "Fire-raising/Malicious Mischief". This is a touch distorted with low initial numbers and a rising population in Kinloss in 2013 which is not accounted for here, but the base number of incidents of criminal behaviour went from a total of 45 in 2012/13 to 81 in 2013/14. The crime rate in Kinloss in 2013/14 was similar to Forres but both were still lower than Moray.

8 Access to Services

The Scottish Index of Multiple Deprivation rates 6,506 Datazones across Scotland and gives a scoring of between 1 and 5 (1 being the most deprived, 5 being the least deprived) to seven key domains (Income, Housing, Health, Employment, Education/Skills & Training, Crime and Access to services). Kinloss includes two data zones including “East Kinloss” and “West Kinloss”. In relation to the “Access to Services”, “East Kinloss” ranked as 1 (most deprived) and “West Kinloss” as 2 (second most deprived).

8.1 Drive time to (2012 data)

Table 31 Drive time (minutes)⁴⁴

Name	GP	Post Office	Petrol Station	Primary School	Secondary School	Shopping Facilities
East Kinloss	10.1	4.0	4.4	6.4	10.2	9.3
West Kinloss	7.8	1.7	2.1	4.4	7.7	6.9
Moray	5.0	3.8	4.9	4.4	6.4	7.1
Virtual Comparator	5.4	4.2	5.7	5.2	7.9	7.4

- The above table provides estimated journey times by car to essential services for those residing in different datazones in Kinloss ranked from the most deprived at the top to the least deprived at the bottom. In those areas marked in bold among the Kinloss listings, the time in minutes is higher than the Moray average, all the other areas have a lower drive time to the services than Moray and/or the virtual comparator.

8.2 Public transport to (2012 data)

Table 32 Public Transport time to (Minutes)⁴⁵

Datzone	GP	Post Office	Shopping Facilities
East Kinloss	28.1	15.8	29.3
West Kinloss	21.9	3.6	17.4
Moray	17.8	13.9	21.4
Virtual Comparator	16.1	13.0	19.5

⁴⁴ The SIMD divides Scotland into 6,505 small areas, called datazones, each containing around 350 households. The Index provides a relative ranking for each datazone. In quintiles, the rankings are 1 (most deprived) to 5 (least deprived).

⁴⁵ The SIMD divides Scotland into 6,505 small areas, called datazones, each containing around 350 households. The Index provides a relative ranking for each datazone. In quintiles, the rankings are 1 (most deprived) to 5 (least deprived).

-
- The above table provides estimated journey times by public transport to essential services for those residing in Kinloss. All are above the Moray or virtual times with the exception of access to the post office and shopping facilities (marked in bold) from the West Kinloss area.

9 Summary

Table 33 SIMD 2012 Quintile ranks of the single datazone which covers the Kinloss area⁴⁶

Name	Income	Housing	Health	Employment	Education/ Skills/ Training	Crime	Access to Services	Overall
East Kinloss	4	5	5	5	3	5	1	4
West Kinloss	4	5	5	5	4	5	2	5

Kinloss shows a relatively good SIMD scoring in all categories, with the exception of access to services. Although Kinloss resembles Moray in some aspects there are a number of differences between Kinloss and Moray some of which are listed below...

1. The population structure of Kinloss in 2011 was significantly different to Moray as a whole with a much younger age demographic. 80% of the population were below the age of 45 and more than half of those residents were below the age of 30.
2. In the 10 years between 2001 & 2011, Kinloss has seen a fall in its overall population of 45.5% and in the same period, the proportion of over-sixties has risen by 3.5%.
3. Kinloss has a higher rate of “married or in a civil partnership” and “separated (but still legally married or still legally in a same-sex civil partnership)” compared with the rest of Moray or Scotland.
4. Over two fifths of residents in Kinloss are “white Other British” (the highest of any locality in Moray), which is significantly higher than Moray as a whole and over five times the national percentage.
5. In Kinloss there is a higher proportion of households with dependent children (45.5%) compared with both Moray (25.6%) and Scotland (24.5%) and a slightly higher rate of lone parent households with dependent children in Kinloss (7.1%) compared to Moray (5.7%) though this is close to the national average.
6. Over a third of Kinloss households are private rented (33.8%) compared to Moray (12.6%) or national (12.4%).

⁴⁶ The SIMD divides Scotland into 6,505 small areas, called datazones, each containing around 350 households. The Index provides a relative ranking for each datazone. In quintiles, the rankings are 1 (most deprived) to 5 (least deprived).

-
7. Kinloss (47.6%) has the second highest proportion of semi-detached housing than either Moray or Scotland (18.4% and 18.6% respectively), but still lower than Portgordon (52.7%).
 8. Kinloss (34.4%) has a significantly higher proportion of “2 vehicles per household” compared to Moray (25.5%) or Scotland (21.6%). Combined, Kinloss (with 42.3%) has one of the highest rates of households with 2 or more cars in Moray.
 9. Kinloss (78.6%) has a higher level of economically active adults compared with Scotland (69%) and Moray (71.5%).
 10. Despite the percentage of people in Kinloss economically active in full time employment reducing from 62.6% in 2001 to 53.2% in 2011, Kinloss still has the highest percentage in full time employment of any locality in Moray.
 11. Kinloss has a relatively high percentage of unemployment (6.6% the highest of the localities in Moray), compared to Moray (3.9%) and Scotland (4.8%). The rate of Long-term unemployed in Kinloss (18.8%) is more than double the Moray average (7.9%) and significantly higher than Scotland (10.7%). Also, Kinloss has a relatively high rate of residents “looking after home or family”.
 12. The percentages employed in Kinloss within “Public administration and defence” were over 3 times higher than Moray (11.9%) and over $5\frac{1}{2}$ times higher than Scotland (7%).
 13. The proportion of “Associate professional and technical occupations” within Kinloss was almost $2\frac{1}{2}$ times the percentage in Moray.
 14. Of those travelling to work or education, Kinloss has a similar level of residents travelling to work by car (64%) compared to both Moray and Scotland. However, a higher percentage of Kinloss residents use “other” modes of transport (bicycle, motorbike etc.) to travel to their workplace.
 15. Kinloss has a slightly higher number of 16-17 year olds in full time education than the rest of Moray and is only fractionally lower than Scotland.
 16. The proportion of persons aged 16 and over in Kinloss without any qualifications (11.2%), is significantly lower than Moray or National levels while its proportion of those educated to degree level and beyond is slightly higher than the Moray or national figures.
 17. Kinloss has the highest proportions of its 16+ population having attained qualifications at level 2 or 3 than any other location in Moray and higher than national.

-
18. In relation to attainment, the tariff score suggests that S4 and S5 attainment in Kinloss is lower than Moray or Scotland with the exception of the proportion of S5 pupils achieving 1 or 3 awards at level 6 which is the highest in Moray.
 19. Kinloss has a higher proportion of pupils entering Further Education (33.3%) than the rest of Moray or Scotland, but a lower proportion entering Higher Education (25.6%).
 20. Training was the destination of 2.6% of leavers from Kinloss and in this aspect it is similar to Forres.
 21. Almost 93% of Kinloss residents describe themselves as being of either “Very good” or “Good” health compared to 85% in Moray and 82.2% in Scotland and only 7.3% were limited by a health problem or long-term condition.
 22. The rates of emergency hospital admissions from Kinloss are lower than Moray and national figures as were the proportion of the population providing care (5.1%)
 23. While the rates for mental health in Kinloss/Forres (Forres Centre) are not the highest in Moray, they are among the highest while the rate of depression is the highest and both are above the Moray and national averages. Obesity is another condition where rates are higher in Kinloss/Forres. Kinloss specific figures cannot be extracted from this but given the age profile then obesity may be less of an issue in Kinloss but not the mental health and depression.
 24. Kinloss had a much lower rate of incidents of Anti-Social Behaviour or Crime compared to Moray as a whole.

Performance Management Officer

Corporate Policy Unit

The Moray council

Tel: 01343 543451



**Moray
Community Planning
Partnership**