

# Community Profile

## Burghead

### Lossiemouth ASG/LMG



**Moray  
Community Planning  
Partnership**





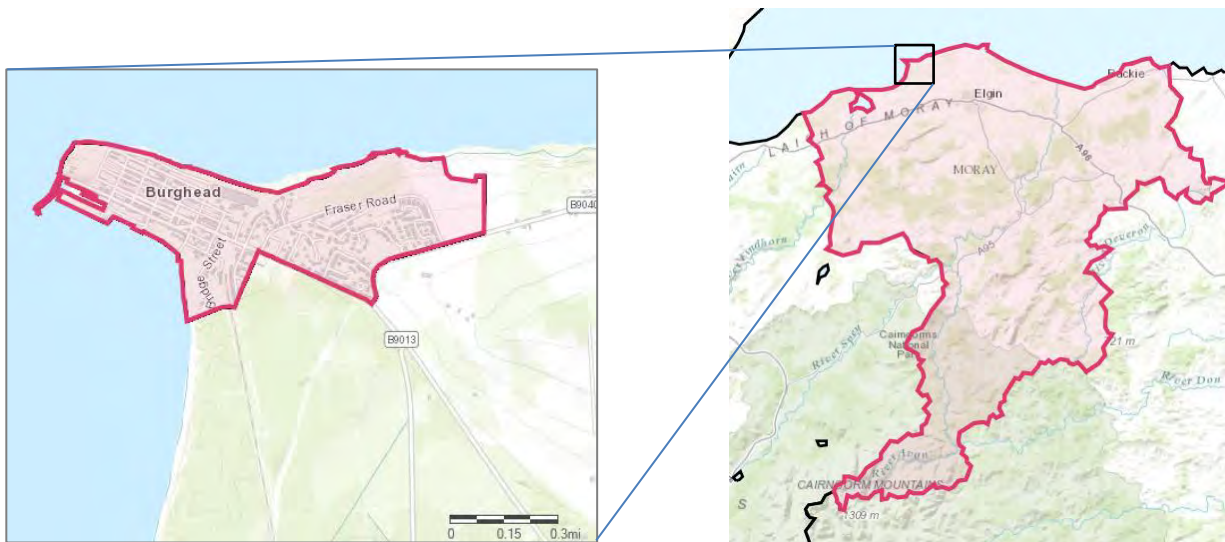
---

# Burghead, Moray

---

## **Area profile**

*Burghead (Scots: Burgheid or The Broch, Scottish Gaelic: Am Broch) is a small town in Moray, Scotland, about 8 miles (13 km) north-west of Elgin. The present town was built between 1805 and 1809, destroying in the process more than half of the site of an important Pictish hill fort, where carved slabs depicting bulls were found; now known as the "Burghead Bulls". The Burghead Well, which lies within the perimeter of the promontory fort, was discovered in 1809 and thought to be Roman or early Christian baptistery in origin (hence named St Aethan's well) but its origins remain obscure to this day though more recent theories suggest it is of Dark Age provenance with some ceremonial significance, beyond providing a water supply for the fort.*



© Crown Copyright 2016

*A fire festival called the Burning of the Clavie is held around the 11<sup>th</sup> of January each year (representing the new-year in the Julian calendar). When the Clavie (a burning tar-barrel) falls in pieces, the people scramble to get a lighted piece with which to kindle the New Year's fire on their cottage hearth. The charcoal of the clavie is then collected and put in pieces up the cottage chimneys, to keep spirits and witches from coming down.*

Corporate Policy Unit  
The Moray Council  
October 2016



---

## Table of Contents

<b>1</b>	<b>Population Structure</b> .....	<b>4</b>
1.1	Age profile .....	4
1.2	Marital Status .....	6
<b>2</b>	<b>Identity</b> .....	<b>7</b>
2.1	Ethnicity .....	7
2.2	Country of Birth .....	8
2.3	Religion .....	8
2.4	Length of residency for residents born overseas .....	9
2.5	Language .....	10
<b>3</b>	<b>Housing</b> .....	<b>11</b>
3.1	Tenure and House Type.....	12
3.2	Transport.....	13
<b>4</b>	<b>Economy and Labour</b> .....	<b>15</b>
4.1	Economic Activity .....	15
4.2	Industry .....	16
4.3	Occupation.....	17
4.4	Unemployment.....	18
4.5	Transport.....	19
<b>5</b>	<b>Education</b> .....	<b>20</b>
5.1	Attainment.....	22
5.1.1	S4 Attainment .....	22
5.1.2	S5 Attainment .....	22
5.2	Leaver Destination .....	23
<b>6</b>	<b>Health and Social care</b> .....	<b>24</b>
6.1	Health .....	24
6.1.1	Maternity .....	26
6.2	Social Care .....	27
6.3	Hospital Emergency Admissions .....	28
<b>7</b>	<b>Antisocial Behaviour</b> .....	<b>29</b>
<b>8</b>	<b>Access to Services</b> .....	<b>31</b>
8.1	Drive time to (2012 data).....	31
8.2	Public transport to (2012 data) .....	32
<b>9</b>	<b>Summary</b> .....	<b>33</b>

---

Table 1 Age structure of Burghead (2011) .....	4
Table 2 Over–Sixties in 2001 and 2011.....	4
Table 3 16-29 year old in 2001 and 2011 .....	5
Table 4 Marital Status .....	6
Table 5 Ethnicity .....	7
Table 6 Country of birth .....	8
Table 7 Religion .....	8
Table 8 Length of residence in the UK .....	9
Table 9 Household Composition .....	11
Table 10 Tenure and House Type .....	12
Table 11 Cars per household .....	13
Table 12 Economic Activity .....	15
Table 13 Employment by Industry .....	16
Table 14 Occupation .....	17
Table 15 Travel to Work .....	19
Table 16 Education Facts .....	20
Table 17 Travel to study .....	21
Table 18 Highest qualification .....	21
Table 19 S4 Attainment .....	22
Table 20 S5 Education Attainment .....	22
Table 21 Leaver Destination .....	23
Table 22 Self-assessed Health .....	24
Table 23 Disability .....	24
Table 24 Long Term health Conditions .....	25
Table 25 Health Condition Prevalence rates by GP Practice .....	25
Table 26 Teenage Pregnancies .....	26
Table 27 Provision of Unpaid Care .....	27
Table 28 Emergency Admissions .....	28
Table 29 Number of Antisocial Behaviour Complaints per 1000 population .....	29
Table 30 Crime rates .....	29
Table 31 Drive time (minutes) .....	31
Table 32 Public Transport time to (Minutes).....	32
Table 33 SIMD 2012 Quintile ranks of the datazones which cover the Burghead area.....	33
Figure 1 Population profile of Burghead and Moray at 2001 and 2011 .....	5
Figure 2 Number of people employed in each of the groupings at 2001 and 2011 .....	17

---

# 1 Population Structure

---

## 1.1 Age profile

- Burghead had a population of 1,945 in 2011<sup>1</sup>, which is an increase from 1,640 people who lived in the area in 2001. This represents an 18.6% increase from 2001 to 2011, which is significantly higher than Moray (7.3%) and Scotland (4.6%).
- The age profile of Burghead shows the median age for males was 42 and females was 44 which is 1 year older than the Moray average in each case.

**Table 1 Age structure of Burghead (2011)<sup>2</sup>**

Age	Burghead	Moray	Scotland
% 0 to 4 years old	5.6	5.6	5.5
% 5 to 15 years old	13.0	12.6	11.8
% 16 to 29 years old	15.1	16.1	18.5
% 30 to 44 years old	17.7	19.1	20.0
% 45 to 59 years old	25.2	21.3	21.1
% 60 to 74 years old	16.8	16.9	15.5
% 75 years old and over	6.6	8.4	7.7

- Table 1 above shows that, in 2011, the population structure of Burghead had proportionally more people over the age of 45 (48.6%) than Moray (46.6%) and Scotland (44.3%).
- Table 1 also shows the difference between the percentages of 16-29; 30-44 and 75+ age groups, in the 2011 Burghead population compared to Moray and Scotland, with Burghead being slightly lower.
- Both locally and nationally the over 60s population has shown an increase between the two census dates, the population of Burghead however has shown a more marked increase (4.4%) between these two periods. However, in 2011 Burghead still had a lower proportion of its population over sixty (1.9% less) than Moray but higher (0.2% more) than Scotland, as table 2 below shows.

**Table 2 Over-Sixties in 2001 and 2011**

Age	Burghead	Moray	Scotland
% over sixty 2001	19.0	21.5	21.1
% over sixty 2011	23.4	25.3	23.2

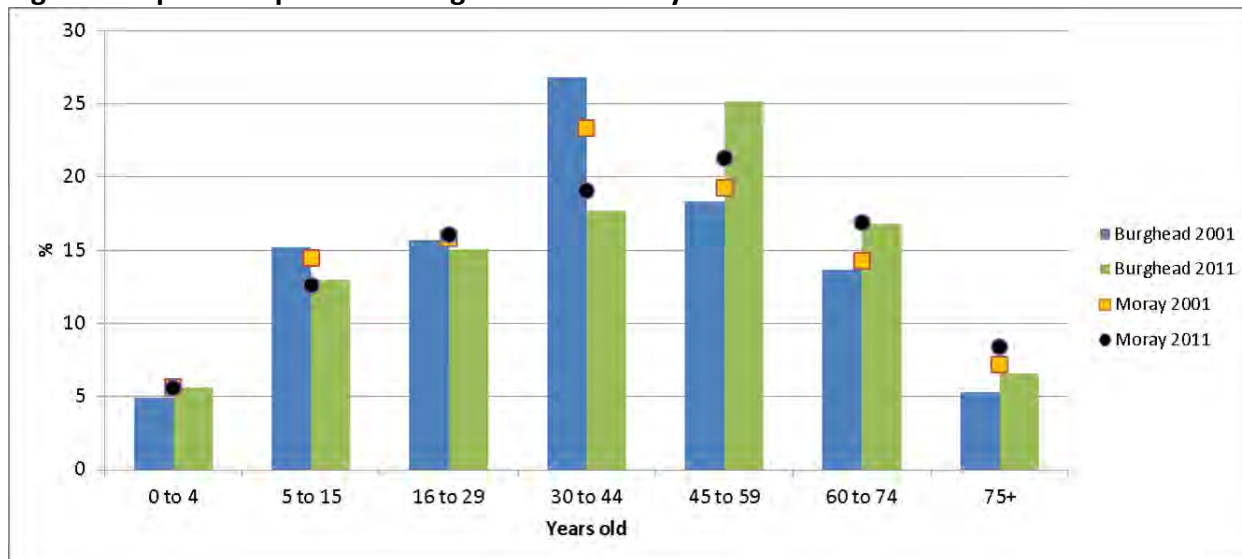
---

<sup>1</sup> 2011 census

<sup>2</sup> 2011 census



**Figure 1 Population profile of Burghead and Moray at 2001 and 2011<sup>3</sup>**



- However, there was a significantly higher proportion of the population in the 45-59 age group in Burghead than the rest of Moray in the 2011 census, which in ten years' time will potentially increase the proportion in the older age categories regardless of whether school leavers may be choosing/able to stay in the Burghead area in similar proportions to Moray or Elgin. (Section 5.2 shows the highest proportion of school leavers moving onto employment which may be within the Burghead area).

**Table 3 16-29 year old in 2001 and 2011<sup>4</sup>**

Age	Burghead	Moray	Scotland
% 16-29 years old 2001	15.7	15.8	17.5
% 16-29 years old 2011	15.1	16.1	18.5

- The trends of the two censuses indicate that the population of Moray is getting older while the percentage of young people staying in the area after leaving school is slightly improving. The reason for the increasing over-sixty demographic is thought to be that people are living longer. In Burghead, the increase in the percentage of older people is higher than for Moray and the relative population percentage of over 60s continues to climb at a higher rate.
- The Scottish Government have predicted large rises in spending on health and social care for the elderly (rising from £4.5 billion in 2011/12 to £8 billion in 2014/15) due to the

<sup>3</sup> 2011 census

<sup>4</sup> 2011 census

<sup>5</sup> [http://www.audit-scotland.gov.uk/docs/central/2014/nr\\_140206\\_resaping\\_care.pdf](http://www.audit-scotland.gov.uk/docs/central/2014/nr_140206_resaping_care.pdf)

higher percentage rise in the numbers of over 60s in comparison to those in younger age brackets. Hence, for a relatively older population in Burghead, spending is expected to increase proportionately.

## 1.2 Marital Status

**Table 4 Marital Status** <sup>6</sup>

<b>Marital status</b>	<b>Burghead</b>	<b>Moray</b>	<b>Scotland</b>
All people aged 16 and over	1,583	76,251	4,379,072
% Single (never married or never registered a same-sex civil partnership)	29.0	28.8	35.4
% Married or in a registered same-sex civil partnership	52.2	51.8	45.4
% Separated (but still legally married or still legally in a same-sex civil partnership)	3.2	3.1	3.2
% Divorced or formerly in a same-sex civil partnership which is now legally dissolved	8.0	8.5	8.2
% Widowed or surviving partner from a same-sex civil partnership	7.7	7.9	7.8

- A fractionally higher proportion of residents in Burghead (52.2%) are married or in a civil partnership compared with the rest of Moray (51.8%) with the two areas having a very similar profile.

---

<sup>6</sup> 2011 census



---

## 2 Identity

---

### 2.1 Ethnicity

**Table 5 Ethnicity**<sup>7</sup>

<b>Ethnicity</b>	<b>Burghead</b>	<b>Moray</b>	<b>Scotland</b>
All people	1,945	93,295	5,295,403
% White - Scottish	72.2	77.7	84.0
% White - Other British	26.0	18.0	7.9
% White - Irish	0.2	0.5	1.0
% White - Polish	0.1	1.1	1.2
% White - Other	0.9	1.7	2.0
% Asian, Asian Scottish or Asian British	0.5	0.6	2.7
% Other ethnic groups	0.2	0.5	1.3
Percentage of households where not all persons are in same ethnic group category	16.6	14.5	10.6

- Burghead has a lower proportion (72.2%) of white Scottish residents compared with Moray as a whole.
- Over one quarter (26%) of Burghead residents were “White Other British”, which is significantly higher than Moray as a whole and over three times the national percentage. This was not as high as areas closer to the military bases, but would perhaps be directly affected by a military presence. The result being that all other ethnicities had lower proportions than in Moray as a whole or nationally.
- The cumulative “White-Non Scottish” numbers equate to 27.2% of the Burghead population. This figure is significantly higher than Moray (21.3%) and over twice that of Scotland (12.1%) and added to the proportion of “White-Scottish” residents makes Burghead a predominantly white population.
- There is a higher percentage of households where residents are not from the same ethnic group in Burghead (16.6%) compared with both Moray (14.5%) and Scotland (10.6%); this is likely to be due to the number of households being made up of Scottish and other British members.

---

<sup>7</sup> 2011 census

## 2.2 Country of Birth

**Table 6 Country of birth**<sup>8</sup>

Country of birth	Burghead	Moray	Scotland
All people	1,945	93,295	5,295,403
% Scotland	70.7	75.4	83.3
% England	23.8	17.8	8.7
% Wales	1.2	0.9	0.3
% Northern Ireland	0.6	0.7	0.7
% Republic of Ireland	0.2	0.2	0.4
% Other EU countries (inc UK part not specified)	1.5	2.9	2.6
% Other countries	2.0	2.1	4

- In total, Burghead has 96.3% British born residents compared to 94.8% in Moray and 93% in Scotland.
- Within this high proportion of British born residents, there was a significantly higher proportion of English born residents and a balancing lower proportion of Scottish born residents compared with Moray as a whole.

## 2.3 Religion

**Table 7 Religion**<sup>9</sup>

Religion	Burghead	Moray	Scotland
All people	1,945	93,295	5,295,403
% Church of Scotland	37.5	34.0	32.4
% Roman Catholic	3.7	6.6	15.9
% Other Christian	11.6	9.4	5.5
% Muslim	0.1	0.3	1.4
% Other religions	1.2	0.9	1.1
% No religion	37.9	41.2	36.7
% Not stated	8.1	7.7	7.0

<sup>8</sup> 2011 census

<sup>9</sup> 2011 census

- Burghead (with 37.5%) has a higher proportion of people stating their religious beliefs are that of the Church of Scotland compared with both Moray (34%) and Scotland (32.4%).
- There was a significantly lower proportion of Roman Catholics in Burghead compared with Moray; and the rate is less than a quarter of that of Scotland as a whole.
- Burghead has a slightly higher rate of those stating their religious beliefs as “Other Christian”. This category is represented by 11.6% of the resident population compared with 9.4% for Moray and 5.5% nationally. This value may be influenced by the percentage of English (potentially Anglican) in the Burghead population and the presence of a Free Church in a former fishing village with historic, traditional, and cultural links to the Church in general.

## 2.4 Length of residency for residents born overseas

**Table 8 Length of residence in the UK <sup>10</sup>**

<b>Length of residence in UK</b>	<b>Burghead</b>	<b>Moray</b>	<b>Scotland</b>
<i>All people</i>	1,945	93,295	5,295,403
All people born outside the UK	69 (3.5%)	4,883 (5.2%)	369,284 (7.0%)
% Resident in UK for less than 2 years	11.6	14.3	22.1
% Resident in UK for 2 years or more but less than 5 years	5.8	20.2	21.7
% Resident in UK for 5 years or more but less than 10 years	8.7	16.5	18.8
% Resident in UK for 10 years or more	73.9	49.0	37.4

- 3.5% of residents in Burghead were born outside the United Kingdom which is lower than the Moray average (5.2%) and half the national figure (7.0%).
- A greater proportion of Burghead residents born outside the UK (73.9%) have been “resident in the UK for 10 years or more” compared to 49% in Moray and 37.4% in Scotland. Thus, there are lower rates in those “resident in the UK” in each of the other three categories compared to Moray and Scotland. However these residents were not necessarily resident in Burghead for this period of 10 years, but perhaps resident elsewhere in the UK.

<sup>10</sup> 2011 census

- 
- Only 5.8% of Burghead residents have lived in the United Kingdom for between two and 5 years, compared to 20.2% in Moray and 21.7% in Scotland.

## 2.5 Language

- Of the 1,885 residents of Burghead aged 3 and over, 99.1% speak English well or very well which is slightly higher than both Moray (98.5%) and national figures (98.6%). This is unsurprising given the low percentage, in comparative terms, of residents born outside the United Kingdom and the high percentage of those residents born outside which have been resident in the UK for over 10 years. A total of 0.9% stated that they did not speak English well or at all while 3.4% stated they used a language other than English at home. Of the Burghead residents, 38.7% are able to speak Scots<sup>11</sup> which is higher than the national rate (30.1%) but lower than the Moray average (45.3%), while 0.7% spoke Gaelic, which was the same proportion as Moray.

---

<sup>11</sup> Scots is the collective name for Scottish dialects

### 3 Housing

Household composition is important information to determine local services provided by the Council, its partners and the third sector.

**Table 9 Household Composition** <sup>12</sup>

Household Composition	Burghead	Moray	Scotland
Total number of households (with residents)	835	40,062	2,372,777
% One person household - Aged 65 or over	12.8	13.7	13.1
% One person household - Aged under 65	16.6	16.4	21.6
% One family only: Lone parent: With dependent children	6.1	5.7	7.2
% One family only: Lone parent: All children non-dependent	4.8	3.5	3.9
% One family only: Married or same-sex civil partnership couple: With dependent children	14.9	15.9	13.6
% One family only: Married or same-sex civil partnership couple: No dependent children	23.0	21.7	18.4
% One family only: Cohabiting couple: With dependent children	4.1	4.0	3.7
% One family only: Cohabiting couple: No dependent children	4.3	5.5	5.5
% Other households: All full-time students	0.0	0.0	0.9
% Other households: All aged 65 and over	9.1	9.7	7.8
% Other households: Other	4.3	3.9	4.4

- There are 835 households in Burghead with an average of 2.3 residents per household, the same as Moray and close to the national average (2.2) with nearby Kinloss (with 2.7) having the highest number of residents per household in Moray.
- There is a lower proportion of one-person-over-65 households in Burghead (12.8%) compared with that of Moray (13.7%) and Scotland (13.1%). Having a lower rate of elderly residents living alone is likely to put less pressure on Health & Social Care services.
- There is a higher proportion of lone parent households in Burghead with a total of 10.9% (6.1% with dependent children and 4.8% with non-dependent children) compared to 9.2% in Moray but lower when compared to Scotland (11.1%). There are similar proportions of “Married or same-sex civil partnership couples” in Burghead but slightly higher proportions with no dependent children with 23% in Burghead, compared to 21.7% in Moray and 18.4% in Scotland.

<sup>12</sup> 2011 census

- Over-65 households in Burghead account for 21.9% of all households compared with 23.4% for Moray and 20.9% for Scotland.
- Burghead falls between Moray and Scotland for the proportion of households with dependent children with 25.1%, compared with Moray (25.6%) and Scotland (24.5%). However there is a higher rate of lone parent households with dependent children in Burghead (6.1%) compared to Moray (5.7%) and Scotland (7.2%).
- One-person households in Burghead account for 29.4% of all households, which is slightly lower than Moray (30.1%) or Scotland (34.7%).

### 3.1 Tenure and House Type

**Table 10 Tenure and House Type**<sup>13</sup>

Tenure	Burghead	Moray	Scotland
Total number of households (with residents)	835	40,062	2,372,777
% Owned	73.1	65.9	62.0
% Rented from Council	10.2	14.1	13.2
% Other social rented	6.8	5.2	11.1
% Private rented	8.3	12.6	12.4
% Living rent free	1.7	2.1	1.3
% House or bungalow	93.1	87.0	63.4
% Detached	41.4	37.2	21.9
% Semi - detached	32.1	31.4	22.8
% Terraced house (including end-terrace)	19.5	18.4	18.6
% Flat or maisonette or apartment	6.9	12.6	36.4
% Caravan or other mobile or temporary structure	0.0	0.4	0.2

- 73.1% of all properties in Burghead are owned by the occupants, this value is higher than the values for Moray (65.9%), Scotland (62%), but not as high as Duffus (91.7%).
- 10.2% of housing in the Burghead area is rented from the Council which is a higher proportion than for Duffus (3%) or Hopeman (5%), but lower than Lossiemouth (13.4%), Moray (14.1%) or Scotland (13.2%).
- The proportion of private rented is lower in Burghead (8.3%) compared to Moray (12.6%) or Scotland (12.4%) while “Other social rented” (6.8%) is higher when compared to 5.2% in Moray but lower than Scotland (11.1%)

<sup>13</sup> 2011 census



- Burghead with 6.9%, has significantly less flats, maisonettes, or apartments than Moray (12.6%) or the rest of Scotland (36.4%); with the majority (93.1%) of households in Burghead being “House or Bungalow” compared to 87% in Moray and 63.4% in Scotland.
- Burghead has a slightly higher proportion of terraced housing than either Moray or Scotland with 19.5% compared to 18.4% and 18.6% respectively.
- 41.4% of the Burghead properties were detached, which is considerably higher than the national average (21.9%) but only 4.2% higher than the Moray average (37.2%). As detached properties generally attract greater value and with the higher proportion of this type of property in Burghead, it would perhaps be expected that the average house price would also be higher, however the average house prices in Burghead<sup>14</sup> (£148,531) are lower than in Moray (£150,779). The prices have risen by 7.45% in the last 12 months in Burghead compared to a 3% rise in Moray<sup>15</sup>.
- In the past year a higher percentage of housing stock, 41 properties (6.7% of owned properties), have been sold in Burghead<sup>16</sup> in comparison to 1,362 (5.2%) in Moray<sup>17</sup>. It may be that some areas are restricted in the selling of council houses due to ‘protected area status’.

## 3.2 Transport

**Table 11 Cars per household** <sup>18</sup>

Car or van availability	Burghead	Moray	Scotland
Total number of households (with residents)	835	40,062	2,372,777
% No car or van	14.5	19.9	30.5
% 1 car or van	48.7	46.9	42.2
% 2 cars or vans	27.4	25.5	21.6
% 3 or more cars or vans	9.3	7.7	5.6

- As the above table shows, Burghead has a higher proportion of households (9.3%) with 3 or more cars compared to Scotland or Moray with 5.6% and 7.7% respectively. Burghead also has a higher proportion of 2 vehicles per household with 27.4% compared 25.5% in Moray and 21.6% in Scotland.

<sup>14</sup> <http://www.zoopla.co.uk/market/burghead/?q=Burghead> (values quoted at 21/10/2016)

<sup>15</sup> <http://www.zoopla.co.uk/market/moray/?q=moray> (values quoted at 21/10/2016)

<sup>16</sup> <http://www.zoopla.co.uk/market/burghead/?q=Burghead> (values quoted at 21/10/2016)

<sup>17</sup> <http://www.zoopla.co.uk/market/moray/?q=moray> (values quoted at 21/10/2016)

<sup>18</sup> 2011 census

- 
- In Burghead there is a lower proportion (14.5%) of households with no vehicle compared to the Moray average (19.9%) and the Burghead proportion is less than half the national average (30.5%).
  - Burghead also has a higher proportion (48.7%) of households with a single vehicle compared to Moray (46.9%) or Scotland (42.2%).
  - Given the link to the number of people who travel to work by car, the accessibility of services and public transport etc. (see sections 4.5 and 8) then there is perhaps a greater need for cars in general hence a higher number of households with one or more cars.

---

## 4 Economy and Labour

---

### 4.1 Economic Activity

**Table 12 Economic Activity**<sup>19</sup>

<b>Economic Activity</b>	<b>Burghead</b>	<b>Moray</b>	<b>Scotland</b>
All persons 16 to 74	1,454	68,410	3,970,530
% Economically active	72.4	71.5	69.0
% Employees - part-time	15.7	15.7	13.3
% Employees - full-time	43.5	41.4	39.6
% Self-employed	6.5	8.4	7.5
% Unemployed	5.0	3.9	4.8
% Full-time student - employed	1.2	1.7	2.9
% Full-time student - unemployed	0.6	0.4	0.8
% Economically inactive	27.6	28.5	31.0
% Retired	16.8	16.3	14.9
% Student	2.8	3.4	5.5
% Looking after home or family	3.3	3.9	3.6
% Long-term sick or disabled	3.4	3.2	5.1
% Other	1.3	1.5	1.9

- Burghead has a slightly higher level (72.4%) of economically active adults compared with Scotland (69%) and Moray (71.5%), this level is very similar to Elgin and Lhanbryde.
- The cumulative values of all “economically active” people in employment, as employees (full or part-time), in Burghead (59.2%) shows that there is a higher proportion of people being employed than in Moray (57.1%) or Scotland (52.9%).
- Since the 2001 census the percentage of people in Burghead economically active in full time employment has increased from 41.6% to 43.5% in 2011, while in the same period the economically active in part-time has increased from 12.6% to 15.7% and the proportion of self-employed has also increased slightly (from 5.6% to 6.5%) though it is still lower than Moray or Scotland thus the overall proportion of “economically active” in Burghead has risen by 12.6% compared to 8.5% in Moray.
- There was also a slightly higher proportion of retired people in Burghead (16.8%) compared with Moray (16.3%) and Scotland (14.9%) and also a slightly higher proportion of unemployed in Burghead (5% compared to 3.9% in Moray)

---

<sup>19</sup> 2011 census

## 4.2 Industry

**Table 13 Employment by Industry** <sup>20</sup>

Industry	Burghead	Moray	Scotland
All persons aged 16 to 74 in employment	972	45,983	2,516,895
% A. Agriculture, forestry and fishing	1.4	3.2	1.7
% B. Mining and quarrying	2.3	2.9	1.4
% C. Manufacturing	9.8	12.1	8.0
% D. Electricity, gas, steam and air conditioning supply	0.5	0.3	0.8
% E. Water supply; sewage, waste management and remediation activities	0.5	0.6	0.8
% F. Construction	10.4	9.1	8.0
% G. Wholesale and retail trade; repair of motor vehicles and motorcycles	13.8	14.8	15.0
% H. Transport and storage	5.7	4.2	5.0
% I. Accommodation and food service activities	5.9	6	6.3
% J. Information and communication	0.8	1.1	2.7
% K. Financial and insurance activities	0.8	1.2	4.5
% L. Real estate activities	1.1	1.1	1.2
% M. Professional scientific and technical activities	3.0	3.5	5.2
% N. Administrative and support service activities	3.2	3.2	4.3
% O. Public administration and defence; compulsory social security	13.8	11.9	7.0
% P. Education	8.8	7.9	8.4
% Q. Human health and social work activities	14.5	12.7	15.0
% R, S, T, U. Other	3.7	4.1	4.9

- The main Industries for employment for the residents of Burghead are within: “Human health and social work activities”; “Public administration and defence; compulsory social security” and “Wholesale and retail trade; repair of motor vehicles and motorcycles”; with the percentages employed in these areas 14.5%, 13.8%; and 13.8% respectively with the first two listed being slightly higher than Moray as a whole.
- The biggest difference between Moray as a whole and Burghead were the proportion of those employed in “Manufacturing” where Burghead (with 9.8%) was 2.3% lower than Moray (12.1%) but this was still higher than in Scotland (8%).

<sup>20</sup> 2011 census

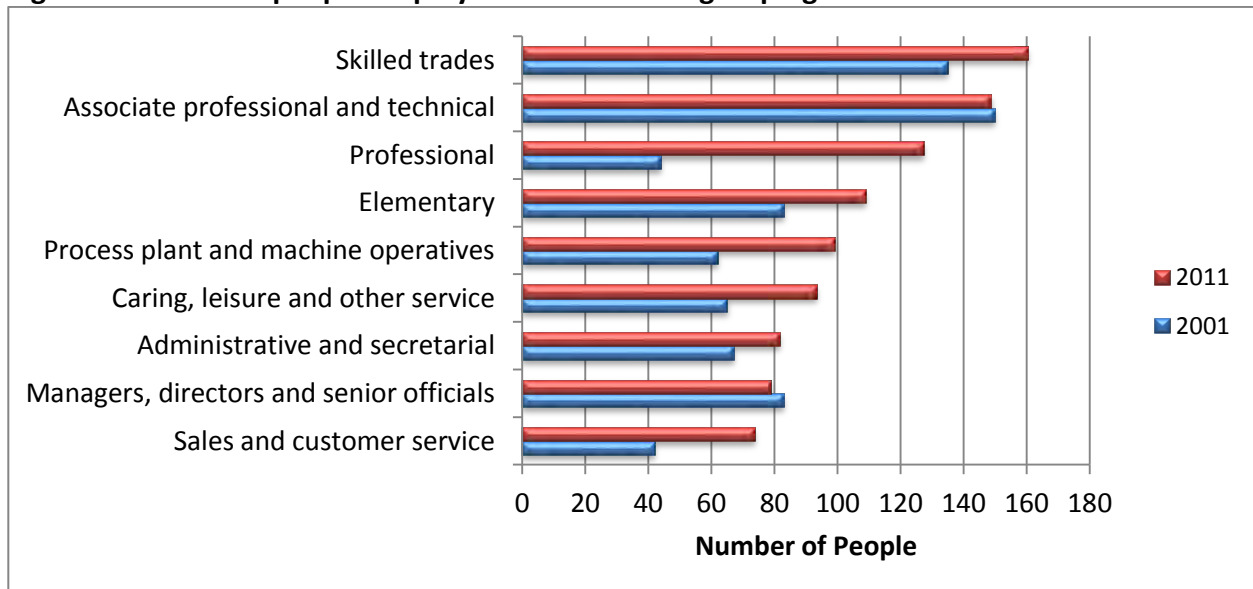
### 4.3 Occupation

**Table 14 Occupation** <sup>21</sup>

Occupation	Burghead	Moray	Scotland
All persons 16 to 74 in employment	972	45,983	2,516,895
% Managers, directors and senior officials	8.1	7.6	8.4
% Professional occupations	13.1	11.4	16.8
% Associate professional and technical occupations	15.3	14.7	12.6
% Administrative and secretarial occupations	8.4	8.4	11.4
% Skilled trades occupations	16.5	16.6	12.5
% Caring, leisure and other service occupations	9.6	10	9.7
% Sales and customer service occupations	7.6	8.1	9.3
% Process, plant and machine operatives	10.2	10.4	7.7
% Elementary occupations	11.2	12.8	11.6

- The top three (highest income) occupation groupings (see first three in table 14 above) accounted for 36.5% of the employed working population of Burghead which is higher than Moray (33.7%), and lower than the national (37.8%) and varies greatly from Findhorn or Kinloss (both over 56%), and Lossiemouth (over 43%).

**Figure 2 Number of people employed in each of the groupings at 2001 and 2011** <sup>22</sup>



- The occupation profile for Burghead was fairly similar to Moray with the biggest difference between the proportion of “Professional occupations”, with Burghead being higher (by 1.7%) than Moray.

<sup>21</sup> 2011 census

<sup>22</sup> 2011 census

- 
- The other main area of difference was a lower proportion of “Elementary occupations” in Burghead, (11.2%) compared to Moray (12.8%).
  - Overall, “Skilled trades occupations” accounted for the highest proportion of those employed from Burghead (16.5%). This is also the case for Moray where the proportion was 16.6%. Nationally, the highest proportion of those employed is found in the “Professional occupations” (16.8%), however these only account for 13.1% and 11.4% in Burghead and Moray respectively.

#### **4.4 Unemployment**

- In the 2011 census of all persons in Burghead aged 16-74, 5% were unemployed compared to 3.9% in Moray and 4.8% of people nationally. In Burghead, this equates to a fall of 0.4% from the 2001 census figure of 5.4%, despite an increase in the number of people unemployed from 66 to 72.
- In Burghead, of those aged 16 to 74 who were unemployed, 30.6% were aged 16 to 24 and 29.2% were aged 50 to 74. Nationally these figures were both lower (30.2% and 18.4% respectively) and in Moray the proportion of those aged 16-24 was higher while the proportion of those aged 50 to 74 was lower (34.7% and 19.9% respectively). The unemployment level of those aged 50-74 being higher is also common to Hopeman (29.6%) and Duffus (28.6%) but not as high as Findochty (36.4%) which was the highest of any locality in Moray.
- Only 5.6% of those listed as unemployed in Burghead have “Never Worked”, which is lower than Moray (9.1%), and significantly lower than the national level of 13.9%. Also Burghead (with 5.6%) seems to have a lower proportion of long term unemployed (last worked before 2005) compared to national levels (10.7%) or Moray (7.9%), and a resultant higher proportion who last worked in 2010 to 2011 (i.e. in the last 12 months before the census).



---

## 4.5 Transport

**Table 15 Travel to Work** <sup>23</sup>

<b>Travel to work</b>	<b>Burghead</b>	<b>Moray</b>	<b>Scotland</b>
All persons aged 16 to 74 who were in employment (excluding full-time students)	954	44,816	2,400,925
% Car (including passengers car pools and taxis)	71.7	63.7	62.4
% Train	2.9	2.2	3.7
% Bus	5.2	3.4	10.0
% On foot	4.9	12.2	9.9
% Other	5.1	6.3	3.1
% Works mainly at or from home	10.1	12.1	10.8

- Burghead has a higher level of residents travelling to work by car (71.7%), compared to both Moray (63.7%) and Scotland (62.4%).
- 5.2% of Burghead residents travelled to work by bus compared to 3.4% in Moray and 10% in Scotland.
- A relatively low percentage of Burghead residents (10.1%) work mainly at or from home in comparison with Moray (12.1%) and Scotland (10.8%). Although this is lower than the Moray rate it has risen at the same level (up 5.3%) since 2001. A relatively low proportion walked to work (4.9%) in comparison with Moray (12.2%) and Scotland (9.9%).
- Between the 2001 and 2011 censuses, the proportion working mainly at or from home increased by 5.3% while the proportion using a car, on foot, or using other modes of transport fell.

---

<sup>23</sup> 2011 census

---

## 5 Education

---

**Table 16 Education Facts** <sup>24</sup>

Interesting facts	Burghead	Moray	Scotland
Percentage 16 to 17 year olds in education	69.8	76.6	79.8
Percentage of households where no person aged 16 to 64 has a highest level of qualification of Level 2 or above, or no person aged 16-18 is a full-time student	44.1	49.0	47.2

- Burghead (with 69.8%) has a lower proportion of 16-17 year olds in full time education than the rest of Moray (76.6%) and Scotland (79.8%), indicating that pupils are leaving school early and either entering or seeking employment or training. Given the occupations prevalent in Burghead, mentioned in section 4.2, and the leaver destinations in section 5.2 this could be the “Wholesale and retail trade; repair of motor vehicles and motorcycles”; “Human health and social work activities”; “Public administration and defence; compulsory social security” or “Construction” offering opportunities and/or apprenticeships. Also the unemployment rate for younger people in Burghead is higher than national but not higher than Moray levels (see section 4.4).
- With a rate of 69.8% Burghead shows a lower proportion of 16-17 year olds in education than Duffus (92.3% or Hopeman (88.9%) but significantly higher than Mosstodloch with 57.6% (the lowest in Moray).
- Burghead (with 44.1%) has a lower proportion of households, compared with both Moray (49%) and Scotland (47.2%), where no one holds a national level qualification above level 2 (SCE Higher or similar) or no person aged 16-18 is a full-time student. This is significantly higher than Kinloss (26%) but also significantly lower than Keith (60.7%).
- In Burghead, 31.6% of pupils/students took a bus to school (see table below) compared to the rest of Scotland (21.5%) and Moray (20.3%); this is due to the provision of school buses transporting pupils to the local secondary schools. A higher proportion (15.5%) of Burghead pupils/students studied mainly at or from home compared to Moray (12%) or Scotland (12.4%).

---

<sup>24</sup> 2011 census

**Table 17 Travel to study** <sup>25</sup>

Travel to study	Burghead	Moray	Scotland
All people aged 4 and over studying	323	15,771	996,282
% Car (including passengers car pools and taxis)	18.3	23.2	22.3
% Train	0.6	1.0	2.9
% Bus	31.6	20.3	21.5
% On foot	33.7	41.5	39.1
% Other	0.3	2.0	1.7
% Studies mainly at or from home	15.5	12.0	12.4

- The proportion of pupils/students travelling by foot in Moray (41.5%) or Scotland (39.1%) is higher than in Burghead (33.7%).
- Due to the high proportion of pupils/students travelling by bus or studying at or from home the proportion travelling by car (18.3%) is lower than Moray (23.2%) or Scotland (22.3%).

**Table 18 Highest qualification** <sup>26</sup>

Highest qualification <sup>27</sup>	Burghead	Moray	Scotland
All persons aged 16 and over	1,583	76,251	4,379,072
% With no qualifications	23.1	26.7	26.8
% Highest qualification attained - Level 1	25.9	26.3	23.1
% Highest qualification attained - Level 2	14.8	14.4	14.3
% Highest qualification attained - Level 3	12.4	9.9	9.7
% Highest qualification attained - Level 4 and above	23.7	22.7	26.1

- The proportion of persons aged 16 and over without any qualifications in Burghead (23.1%), is lower than Moray or national proportions.
- Burghead (with 23.7%) has a slightly higher proportion educated to degree level and beyond, compared with Moray (22.7%) but this is lower than the national figure of 26.1%. With 23.7% qualified to degree level and beyond it is considerably higher than Keith (14.2%) but not as high as Hopeman (29.6%) or Duffus (36.6%). Burghead also has a higher proportion of “HNC equivalent or above” (level 3) qualifications than Moray or Scotland.

<sup>25</sup> 2011 census

<sup>26</sup> Census 2011 <http://www.scotlandscensus.gov.uk/variables-classification/highest-level-qualification>

<sup>27</sup> The following table shows what the levels used in the census mean.

Level 1	Standard Grade (equivalent or above)	Level 2	Higher (equivalent or above)
Level 3	HNC (equivalent or above)	Level 4	Degree (equivalent or above)

## 5.1 Attainment

### 5.1.1 S4 Attainment

Table 19 S4 Attainment <sup>28</sup>

Name	Burghead	Moray	Scotland
Total S4 Students from 2008/9 to 2012/13	123	5,499	280,909
S4: No pupils with 5 awards at SCQF level 5 and above	37	2,161	103,795
Percentage of pupils with 5 awards at SCQF level 5 and above	30.1%	39.3%	36.9%
Average S4 Tariff (approx.)	175	198	185

- The average S4 Tariff score for Burghead (175), which takes into account the number of awards achieved by each pupil and their grades, was lower than Moray's and Scotland's over the 5 years from 2008/09 to 2012/13 and also lower than Lossiemouth (179) but not as low as Kinloss (166).
- The percentage of S4 pupils from Burghead who attained five or more level-5 awards (Standard Grade Credit or Intermediate 2 level) is also lower (by over 9%) than the Moray rate and also lower than the national rate.

### 5.1.2 S5 Attainment

Table 20 S5 Education Attainment <sup>29</sup>

Name	Burghead	Moray	Scotland
Total Students for S5	94	4,380	235,893
S5: No pupils with 1 award at SCQF level 6 and above : 2008/9 - 2012/13	45	2,521	128,253
S5: Percentage of pupils with 1 award at SCQF level 6 and above : 2008/9 - 2012/13	47.87%	57.6%	54.4%
S5: No pupils with 3 awards at SCQF level 6 and above : 2008/9 - 2012/13	25	1,399	74,789
S5: Percentage of pupils with 3 awards at SCQF level 6 and above : 2008/9 - 2012/13	26.6%	31.9%	31.7%
S5: No pupils with 5 awards at SCQF level 6 and above : 2008/9 - 2012/13	14	595	34667
S5: Percentage of pupils with 5 awards at SCQF level 6 and above : 2008/9 - 2012/13	14.9%	13.6%	14.7%
5 year Tariff average (approx.)	350	365	347

<sup>28</sup> Data for the 5 year period from 2008/09-2012/13, Source – Scottish Neighbourhood Statistics - <http://www.sns.gov.uk>

<sup>29</sup> Data for the 5 year period from 2008/09-2012/13, Source – Scottish Neighbourhood Statistics - <http://www.sns.gov.uk>

- Because each year there is a low number of S5 pupils sitting exams the data provided uses a 5 year period from 2008/09-2012/13 to gain a larger sample size to explore how attainment in Burghead compares with the rest of Moray and Scotland.
- Across the first two measures Burghead performs significantly worse than Moray and Scotland with lower percentages achieving one, or three awards at “level 6 or above”.
- However, 14 out of 94 (14.9%) S5 pupils from Burghead over the 5 years achieved five or more level 6 (Higher Grade) awards compared to 13.6% in Moray and 14.7% nationally.
- The S5 tariff scores in Burghead (350) are slightly lower than Moray’s (365) but fractionally higher than Scotland’s (347).

## 5.2 Leaver Destination

**Table 21 Leaver Destination**<sup>30</sup>

Name	Burghead	Moray	Scotland
Total leavers	118	5,237	265,363
Higher Education	28.0%	33.3%	36.0%
Further Education	22.9%	27.2%	27.1%
Training	1.7%	1.5%	5.7%
Employment	35.6%	28.7%	19.7%
Total Positive	88.1%	90.7%	88.4%
Unemployment and seeking employment or training	9.3%	7.4%	9.6%
Unemployed not seeking employment or training	2.5%	1.7%	1.3%
Total Negative Destination	11.9%	9.1%	10.9%
Unknown	0.0%	0.2%	0.6%

- Reflecting the lower tariff scores and attainment, Burghead has a lower proportion of pupils entering Higher Education (28%) than the rest of Moray (33.3%) or nationally (36%), and considerably lower than Duffus (54.4%) but not as low as Lhanbryde (20.9%).
- The proportion of pupils entering employment from Burghead (35.6%) is significantly higher than the national (19.7%) or Moray (28.7%).
- Whilst Moray shows similar averages to the national values for those entering Further Education, Burghead has a lower proportion choosing this avenue as a positive destination mainly due to the higher proportions choosing employment.
- Burghead (with 88.1%) has a lower level of positive destinations to Scotland (88.4%), or Moray (90.7%) and therefore unemployment tends to be higher.

<sup>30</sup> Data for the 5 year period from 2008/09-2012/13, Source – Scottish Neighbourhood Statistics - <http://www.sns.gov.uk>

---

## 6 Health and Social care

---

### 6.1 Health

**Table 22 Self-assessed Health** <sup>31</sup>

	Burghead	Moray	Scotland
All people	1,945	93,295	5,295,403
% Very good	52.5	53.7	52.5
% Good	29.5	31.3	29.7
% Fair	13.4	11.1	12.2
% Bad	3.7	2.9	4.3
% Very bad	0.9	0.9	1.3

- As detailed in the table above, Burghead shows much similarity with both Moray and Scotland as a whole. There are no major differences within any of the fields with only a 2% negative difference between “Good” and “Fair” in Burghead compared to Moray.
- Of the Burghead residents 82% describe themselves as being of either “Very good” or “Good” health compared to 85% in Moray and 82.2% in Scotland.
- Burghead has a higher middle-aged (aged 45-59) population but lower numbers above 75yrs. Despite this relatively older demographic, the combined proportion of residents describing themselves as being in bad or very bad health is 4.6%, lower than the national rate (5.6%) but higher than the Moray rate (3.8%).

**Table 23 Disability** <sup>32</sup>

Long-term health problem or disability	Burghead	Moray	Scotland
All people	1,945	93,295	5,295,403
% Limited a lot	7.6	7.6	9.6
% Limited a little	10.3	10.2	10.1
% Not limited	82.2	82.3	80.4

- 17.9% (348 people) of Burghead residents stated they were limited a little or a lot by a disability or long term health issue, about the same as Moray (17.8%) but lower than national (19.6%) figures.

---

<sup>31</sup> 2011 census

<sup>32</sup> 2011 census



**Table 24 Long Term health Conditions** <sup>33</sup>

Long-term health condition	Burghead	Moray	Scotland
All people	1,945	93,295	5,295,403
% With no condition	70.2	70.9	70.1
% With one or more long-term health conditions	29.8	29.1	29.9
% With deafness or partial hearing loss	6.3	7	6.6
% With blindness or partial sight loss	2.1	2.5	2.4
% With learning disability (for example, Down's Syndrome)	0.3	0.5	0.5
% With learning difficulty (for example, dyslexia)	1.9	2	2
% With developmental disorder (for example, Autistic Spectrum Disorder, Asperger's Syndrome)	0.5	0.6	0.6
% With physical disability	6.2	5.8	6.7
% With mental health condition	3.5	3.2	4.4
% With other condition	18.9	18.2	18.7

- There are no major differences within the fields above in relation to either Local or National figures.
- A slightly higher proportion (29.8% compared to 29.1% Moray) of Burghead residents have one or more long term health conditions which is very close to the national figure (29.9%).
- The most prevalent in the table above is deafness or partial hearing loss (6.3%), followed by physical disability (6.2%) and mental health condition (3.5%).

**Table 25 Health Condition Prevalence rates by GP Practice** <sup>34</sup>

Health Condition Prevalence Rates (per 100 patients)	Moray Coast Practice (Burghead)	Moray	Scotland
"Smoking" (conditions assessed for smoking)	26.61	25.52	24.74
Hypertension	16.22	14.84	13.94
Obesity	10.63	10.53	8.05
Asthma	6.89	5.94	6.10
Diabetes	5.58	5.49	4.79

- The table above shows the 5 most common health conditions recorded at the Moray Coast Medical Practice. The data collection is from March 2013 to April 2014 through the NHS Quality & Outcomes framework. The Moray Coast Practice serves a large area that

<sup>33</sup> 2011 census

<sup>34</sup> [https://isdscotland.scot.nhs.uk/Health-Topics/General-Practice/Publications/2014-09-30/QOF\\_Scot\\_201314\\_Practice\\_prevalencecv2.xls](https://isdscotland.scot.nhs.uk/Health-Topics/General-Practice/Publications/2014-09-30/QOF_Scot_201314_Practice_prevalencecv2.xls)

covers the Moray coast including Burghead with a total GP patient roll of 9,501 (January 2013). For comparison, the Moray and Scotland rates have been included.

- The top four health conditions reported through GP Practices are the same for Burghead, Moray and nationally. The Moray Coast Practice shows a higher incidence in all 5 conditions compared to Moray or Scotland.
- The rate of Osteoporosis (0.43%) in patients with the Moray Coast Practice is the highest in Moray and is close to twice the Moray and national rates (0.20% and 0.22% respectively). The rate of left ventricular dysfunction in the Moray Coast Practice (0.54%) is also over twice the Moray and national rates (0.22% and 0.27% respectively).
- Diabetes rates in the Moray Coast Practice are slightly higher than the Moray rate and higher than the national rates.
- Of the 24 health conditions recorded at GP Practices through the NHS Quality & Outcomes Framework, Moray Coast Practice had 15 conditions where the raw prevalence rates per 100 patients were above the national rate, these were: Smoking (conditions assessed for smoking); Hypertension; Obesity; Asthma; Diabetes; Atrial Fibrillation (1.98); Cancer (2.41); Cardiovascular Disease (2.59); Heart failure (1.14); Hypothyroidism (5.05); Left Ventricular Dysfunction (LVD) (0.54); Osteoporosis (0.43); Peripheral Arterial Disease (1.13); Rheumatoid Arthritis (0.67); and Stroke & Transient Ischaemic Attack (2.38).

### 6.1.1 Maternity

**Table 26 Teenage Pregnancies** <sup>35</sup>

Teenage Pregnancies (Rate per 1000 women)	Moray	Scotland
Teenage pregnancies aged under 16 <sup>36</sup> : 2012-2014	3.0	4.9
Teenage pregnancies aged under 18 <sup>37</sup> : 2012-2014	21.2	24.9
Teenage pregnancies aged under 20 <sup>38</sup> : 2014	32.9	34.1

- There are relatively fewer teenage pregnancies in Moray than for the rest of Scotland. There is a decreasing trend for teenage pregnancies across Scotland including Moray.

<sup>35</sup> Source – Scottish Neighbourhood Statistics - <http://www.sns.gov.uk>

<sup>36</sup> Rate calculated using 3yr aggregate data, 2012-14, 13-15 age group

<sup>37</sup> Rate calculated using 3yr aggregate data, 2012-14, 15-17 age group

<sup>38</sup> Rate calculated using 1Yr data, 15-19 age group

- The three year aggregate data for 2003-2005 for the under 16's indicated that there were 32 teenage pregnancies in Moray, however by 2012-2014 the number recorded had reduced to 15, more than halving the rate. Whilst the Scotland rate has also reduced over the same period it has not done so to the same extent.
- Under 20s rates in Moray are closer to Scotland rates than the other two categories and in this category the Scotland rate has reduced more than Moray's has. In 2005 there were 120 teenage pregnancies in Moray for under 20s; by 2014 the figure had reduced to 91.
- Data for Burghead teenage pregnancies is not freely available. However in the six years between 2006 and 2011 there were 7 recorded births to a first time mother<sup>39</sup> where the mother was under the age of twenty and living in Burghead. Over the same period in Moray there were 367 births to first time mothers under the age of 20.
- Smoking during pregnancy: There were 19 out of 114 incidents (16.7%) of women from Burghead recorded as being smokers (at the time of booking) in the six years from 2008-13. The percentage of pregnant women who smoked at booking was 21.2% for Moray and 20% for Scotland (2013). Splitting this over consecutive three year periods it shows the Burghead percentage falling from 20% in 2008/10 to 12% in 2011/13 which is lower than Moray (20.9%) or Scotland (19.1%) rates.

## 6.2 Social Care

**Table 27 Provision of Unpaid Care** <sup>40</sup>

Provision of unpaid care	Burghead	Moray	Scotland
All people	1,945	93,295	5,295,403
% Not providing care	90.7	91.6	90.7
% Providing 1 to 19 hours of care a week	5.8	4.8	5.2
% Providing 20 to 34 hours of care a week	0.7	0.7	0.9
% Providing 35 to 49 hours of care a week	0.9	0.6	0.8
% Providing 50 or more hours of care a week	1.9	2.2	2.5

- 181 (9.3%) of Burghead residents provide care to either a friend or family member.
- Nearly 62% of those who carry out unpaid care in Burghead provide 1 to 19 hours of care a week.

<sup>39</sup> <http://www.sns.gov.uk/>

<sup>40</sup> 2011 census

- 37 (1.9%) of residents in Burghead provide over 50 hours of care per week, which is slightly lower than the Moray or national rates.

### 6.3 Hospital Emergency Admissions

**Table 28 Emergency Admissions** <sup>41</sup>

	<b>Burghead</b>	<b>Moray</b>	<b>Scotland</b>
Emergency admissions - both sexes - all ages - rate/100,000 : 2012	6,351	7,476	10,194
Emergency admissions - both sexes - aged 65 and over - rate/100,000 : 2012	18,378	16,945	25,493

- The rate of Emergency Admissions (for all ages) in Burghead is significantly lower than the rest of Moray or the national average. For all ages, residents of Burghead are 15% less likely to be admitted to hospital as an emergency than Moray and 38% less likely to be admitted to hospital as an emergency than Scotland as a whole.
- The Burghead residents who are 65 and over, are 8% more likely to be admitted to hospital as an emergency than those from Moray as a whole but 28% less likely than nationally.
- Comparing Burghead residents of all ages with those aged 65 and over, the rates for those over 65 are 2.89 times higher than the overall Burghead population.
- In general emergency admissions are higher in areas nearer a hospital and less so in rural and more remote areas. This is reflected in the rates in Burghead, with the exception of the 65+ where the rate is similar to Elgin's. The Moray rates are some of the lowest nationally.

<sup>41</sup> Source – Scottish Neighbourhood Statistics - <http://www.sns.gov.uk>

## 7 Antisocial Behaviour

**Table 29 Number of Antisocial Behaviour Complaints per 1000 population** <sup>42</sup>

Type of Complaint	Burghead	Moray
Noise	1.8	12.2
Rowdy Behaviour	-	4.0
Neighbour Dispute	2.1	3.9
Graffiti	1.3	0.3
Vandalism	2.6	8.1
Litter	0.3	1.7
Fly Tipping	0.5	3.5
Dog Fouling	1.3	1.3

- Burghead with 9.8 per 1000 pop per year had a significantly lower rate of incidents of Anti-Social Behaviour compared to Moray (34.9 per 1000 pop. per year).
- Burghead was lower than the Moray averages on all complaint types with the exception of Graffiti.
- In 2012, the ranking of the two Burghead datazones was quintile 4 for crime in the Scottish Index of Multiple Deprivation (SIMD)<sup>43</sup> rankings for both “Cunnington and Roseisle” and “Burghead” (with crime rates of 173 and 204 per 10,000 respectively).

**Table 30 Crime rates** <sup>44</sup>

Year	Number of Crimes per 1,000 residents per year	
	Burghead	Moray
2012/13	21.1	67.5
2013/14	35.0	69.4

- From the above table, Burghead’ crime rates for both years were significantly less than Moray as a whole though the rate in 2013/14 increased in Burghead by a larger proportion. However low initial numbers mean that an increase in the number of crimes from 41 to 68 crimes in the year have made the increase seem inflated (67% increase).

<sup>42</sup> Average number of complaints per year over the two years 2012/13 and 2013/14 – from police records

<sup>43</sup> The SIMD is the Scottish Government’s official tool for identifying those places in Scotland suffering from deprivation. It incorporates several different aspects of deprivation, combining them into a single index. It divides Scotland into 6,505 small areas, called datazones, each containing around 350 households. The Index provides a relative ranking for each datazone, from 1 (most deprived) to 6,505 (least deprived).

<sup>44</sup> From police records of reported crimes

- 
- The main reason for the rise in Burghead numbers and rate was an increase in the number of incidents of “Crimes of Dishonesty”; “Other Crimes (Knives, Supply/Possession of Drugs)” and “Miscellaneous (Minor Assault, Breach of the Peace, Threatening Behaviour)”.

---

## 8 Access to Services

---

The Scottish Index of Multiple Deprivation rates 6,506 Datazones across Scotland and gives a scoring of between 1 and 5 (1 being the most deprived, 5 being the least deprived) to seven key domains (Income, Housing, Health, Employment, Education/Skills & Training, Crime and Access to services). In the “Access to Services” area one of the Burghead data zones ranks as 1 (most deprived) in relation to geographic access while the other ranks as 4.

### 8.1 Drive time to (2012 data)

Table 31 Drive time (minutes)<sup>45</sup>

Name (Datazone)	GP	Post Office	Petrol Station	Primary School	Secondary School	Shopping Facilities
Cummingston and Roseisle	3.24	2.97	11.29	3.27	10.49	12.98
Burghead	1.52	1.11	12.14	2.13	12.4	14.02
<b>Moray</b>	<b>5.0</b>	<b>3.8</b>	<b>4.9</b>	<b>4.4</b>	<b>6.4</b>	<b>7.1</b>
<b>Virtual Comparator</b>	<b>5.4</b>	<b>4.2</b>	<b>5.7</b>	<b>5.2</b>	<b>7.9</b>	<b>7.4</b>

- The above table provides estimated journey times by car to essential services for those residing in two datazones in Burghead ranked from the most deprived at the top to the least deprived at the bottom. Both areas have a lower drive time to access a GP, the Post Office or a Primary School and a higher drive time to access a Petrol Station, a Secondary School or Shopping Facilities than Moray and/or the virtual comparator.
- In some instances the time is almost twice or three times longer than the Moray or the virtual comparator e.g. drive time to a Petrol Station.

---

<sup>45</sup> The SIMD divides Scotland into 6,505 small areas, called datazones, each containing around 350 households. The Index provides a relative ranking for each datazone. In quintiles, the rankings are 1 (most deprived) to 5 (least deprived).

---

## 8.2 Public transport to (2012 data)

Table 32 Public Transport time to (Minutes)<sup>46</sup>

<b>Datazone</b>	<b>GP</b>	<b>Post Office</b>	<b>Shopping Facilities</b>
Cummingston and Roseisle	10.43	9.65	26.68
Burghead	2.99	2.56	28.34
<b>Moray</b>	<b>17.8</b>	<b>13.9</b>	<b>21.4</b>
<b>Virtual Comparator</b>	<b>16.1</b>	<b>13.0</b>	<b>19.5</b>

- The above table provides estimated journey times by public transport to essential services for those residing in Burghead. Most are below Moray or virtual times with the exception of access to shopping facilities by public transport.

---

<sup>46</sup> The SIMD divides Scotland into 6,505 small areas, called datazones, each containing around 350 households. The Index provides a relative ranking for each datazone. In quintiles, the rankings are 1 (most deprived) to 5 (least deprived).



## 9 Summary

**Table 33 SIMD 2012 Quintile ranks of the datazones which cover the Burghead area<sup>47</sup>**

Name	Income	Housing	Health	Employment	Education/ Skills/ Training	Crime	Access to Services	Overall
Cummingston and Roseisle	4	4	4	3	3	4	1	3
Burghead	4	4	4	4	3	4	4	4

Although Burghead may resemble Moray in some aspects there are a number of differences between areas within Burghead (shown in table 33 above in the variance of SIMD quintiles) and also between Burghead and Moray some of which are listed below...

1. 48.6% of the Burghead population are above the age of 45, which is higher than both Moray (46.6%) and Scotland (44.3%).
2. In the 10 years between 2001 & 2011, Burghead has seen an overall population rise of 18.6%, the highest in the west of Moray, and in the same period the proportion of over-sixties has risen by 4.4% from 19% to 23.4%. With an increasing percentage of older people coupled with a lower percentage of those aged 16 – 44 this is likely to increase public expenditure in this area.
3. Burghead has a similar profile to Moray in relation to marital status with only fractional differences e.g. 52.2% of Burghead residents aged 16 and over were “married or in registered same-sex civil partnerships” compared to 51.8% in Moray as a whole.
4. 26% of Burghead residents are of “White – Other British” ethnicity, which is higher than Moray (18%) and differs dramatically from Scotland (7.9%). This is reflected in the country of birth where 23.8% of the Burghead population were born in England. For those born outside the UK (only 3.5% of the total population) the majority (73.9%) had been resident in the UK for 10 years or more.
5. Reflecting the high proportion of English and Scottish born Burghead residents, 99.1% speak English well or very well and only 3.4% stated they used a language other than English at home.

<sup>47</sup> The SIMD divides Scotland into 6,505 small areas, called datazones, each containing around 350 households. The Index provides a relative ranking for each datazone. In quintiles, the rankings are 1 (most deprived) to 5 (least deprived).

- 
6. Burghead has a higher proportion of lone parent households with a total of 10.9% (6.1% with dependent children and 4.8% with non-dependent children) compared to 9.2% (5.7% with dependent children and 3.5% with non-dependent children) in Moray.
  7. In Burghead 73.1% of all properties are owned by the occupants compared to 65.9% in Moray and the majority of Burghead housing (93.1%) are houses or bungalows compared to 87% in Moray.
  8. In comparison to Moray, Burghead had a similar economic activity profile with only a slightly higher proportion of Burghead residents who were economically active (72.4%), which is similar to Elgin and Lhanbryde. Also Burghead has a slightly higher proportion of unemployed and retired residents.
  9. "Human health and social work activities"; "Public administration and defence; compulsory social security" and "Wholesale and retail trade; repair of motor vehicles and motorcycles"; are the industry categories that account for the largest proportions (with 14.5%, 13.8%; and 13.8% respectively) of Burghead residents in employment.
  10. "Skilled trades' occupations" accounted for the highest proportion of those employed from Burghead (16.5%) but the biggest difference between Burghead and Moray was in the proportion of "Professional occupations" with Burghead (13.1%) being slightly higher than Moray (11.4%).
  11. Burghead (with 5%) had a higher rate of unemployment compared to Moray (3.9%), and in particular a higher rate of those 50-74 (29.2% compared to 19.9% in Moray).
  12. Burghead (69.8%) had a lower rate of 16-17 year olds in full time education than Moray (76.6%) and significantly lower than Scotland (79.8%).
  13. Burghead has higher proportions educated to "HNC (equivalent or above)" and "Degree (equivalent or above)", compared with Moray but the proportion at degree level is lower than the national figure.
  14. Of those travelling to work or school, a higher proportion of Burghead students (15.5%) study at or from home compared to the rest of Moray (12%) while a higher proportion travel to study by bus (31.6%) compared to Moray or Scotland. Also a higher proportion (8% more than Moray) from Burghead travel to work using a car (71.7%).

- 
15. In relation to attainment, the tariff score and number of awards achieved suggest that S4 and S5 attainment in Burghead are lower than Moray or Scotland with the exception of the attainment of 5 awards at SCQF level 6 for S5 where Burghead is fractionally higher than the national level and 1.3% higher than Moray.
  16. Reflecting the lower attainment performance, Burghead had a lower proportion of pupils entering Higher Education (28%) than the rest of Moray (33.3%) and also a lower overall rate of positive destinations than Moray though similar to Scotland. However, there was a higher proportion of Burghead pupils entering employment (35.6%) compared to Moray (28.7%).
  17. 82% of Burghead residents describe themselves as being of either “Very good” or “Good” health compared to 85% in Moray and 82.2% in Scotland, despite the lower than average proportion of older residents (over 60 or 65yrs) but a higher proportion of middle-aged (45-59 yrs) than Moray.
  18. The rates of Emergency hospital admissions from Burghead (all ages) are significantly lower than Moray or national figures; however admissions for those aged 65+ are higher than the Moray figure.
  19. Rates of Smoking while pregnant fell in the Burghead area from 20% in 2008/10 to 12% in 2011/13 which is now well below the Moray rate (20.9%) for 2011/13.
  20. The rate of incidents of anti-social behaviour in Burghead was significantly lower than Moray as a whole. Crime rates for Burghead are also significantly lower than for Moray but the rate is increasing faster than in Moray as a whole.
  21. Geographically Burghead appears more rural and therefore access by car to services is more difficult e.g. to a Petrol Station or Shopping Facilities. Access via public transport is generally better than Moray as a whole with the exception of shopping facilities.





**Performance Management Officer**

Corporate Policy Unit

The Moray Council

**Tel: 01343 543451**



**Moray  
Community Planning  
Partnership**